

Datasheet for ABIN1325165

Neural Wiskott-Aldrich syndrome protein (WASL) (AA 97-184) protein (GST tag)



[Go to Product page](#)

1 Image

Overview

Quantity:	2 µg
Target:	Neural Wiskott-Aldrich syndrome protein (WASL)
Protein Characteristics:	AA 97-184
Origin:	Human
Source:	Wheat germ
Protein Type:	Recombinant
Purification tag / Conjugate:	GST tag
Application:	ELISA, Western Blotting (WB), Antibody Array (AA), Affinity Purification (AP)

Product Details

Purpose:	WASL (Human) Recombinant Protein (Q01)
Sequence:	NFVYNSPRGY FHTFAGDTCQ VALNFANEEE AKKFRKAVTD LLGRRQRKSE KRRDPPNGPN LPMATVDIKN PEITTNRFYG PQVNNISH
Characteristics:	Human WASL partial ORF (NP_003932, 97 a.a. - 184 a.a.) recombinant protein with GST-tag at N-terminal.
Purification:	in vitro wheat germ expression system

Target Details

Target:	Neural Wiskott-Aldrich syndrome protein (WASL)
Alternative Name:	WASL (WASL Products)

Target Details

Background:	Full Gene Name: Wiskott-Aldrich syndrome-like Synonyms: DKFZp779G0847,MGC48327,N-WASP,NWASP
Gene ID:	8976
NCBI Accession:	NM_003941

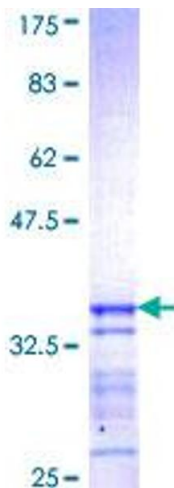
Application Details

Application Notes:	Optimal working dilution should be determined by the investigator.
Comment:	Preparation method: in vitro, wheat germ expression system Product Quality tested by: 12.5% SDS-PAGE Stained with Coomassie Blue.
Restrictions:	For Research Use only

Handling

Buffer:	50 mM Tris-HCl, 10 mM reduced Glutathione, pH =8.0 in the elution buffer.
Handling Advice:	Aliquot to avoid repeated freezing and thawing.
Storage:	-80 °C
Storage Comment:	Best use within three months from the date of receipt of this protein.

Images



SDS-PAGE

Image 1.