



[Go to Product page](#)

Datasheet for ABIN1325173

## WBP2 Protein (AA 1-100) (GST tag)

### 1 Image

#### Overview

|                               |   |
|-------------------------------|---|
| Quantity:                     | 10 µg   |
| Target:                       | WBP2  |
| Protein Characteristics:      | AA 1-100  |
| Origin:                       | Human   |
| Source:                       | Wheat germ  |
| Protein Type:                 | Recombinant   |
| Purification tag / Conjugate: | This WBP2 protein is labelled with GST tag.                                   |
| Application:                  | ELISA, Western Blotting (WB), Antibody Array (AA), Affinity Purification (AP) |

#### Product Details

|                  |  |
|------------------|--|
| Purpose:         | WBP2 (Human) Recombinant Protein (Q01)   |
| Sequence:        | MALNKNHSEG GGVIVNNTES ILMSYDHVEL TFNDMKNVPE AFKGTKKGTV YLTPYRVIFL<br>SKGKDAMQSF MMPFYLMKDC EIKQPVEGAN YIKGTVKAEA |
| Characteristics: | Human WBP2 partial ORF ( NP_036610.2, 1 a.a. - 100 a.a.) recombinant protein with GST-tag at N-terminal.         |
| Purification:    | in vitro wheat germ expression system  |

#### Target Details

|                   |  |
|-------------------|--|
| Target:           | WBP2                                   |
| Alternative Name: | WBP2 ( <a href="#">WBP2 Products</a> ) |

## Target Details

---

Background: Full Gene Name: WW domain binding protein 2  
Synonyms: MGC18269,WBP-2

---

Gene ID: 23558

---

NCBI Accession: [NM\\_012478](#)

---

## Application Details

---

Application Notes: Optimal working dilution should be determined by the investigator.

---

Comment: Preparation method: in vitro, wheat germ expression system  
Product Quality tested by: 12.5% SDS-PAGE Stained with Coomassie Blue.

---

Restrictions: For Research Use only

---

## Handling

---

Buffer: 50 mM Tris-HCl, 10 mM reduced Glutathione, pH =8.0 in the elution buffer.

---

Handling Advice: Aliquot to avoid repeated freezing and thawing.

---

Storage: -80 °C

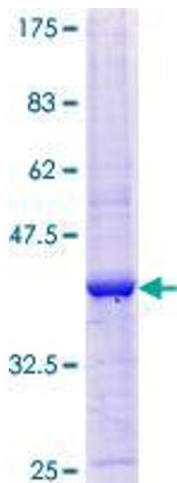
---

Storage Comment: Best use within three months from the date of receipt of this protein.

---

## Images

---



**Image 1.**