



[Go to Product page](#)

Datasheet for ABIN1325191

WDFY3 Protein (AA 1-420) (GST tag)

1 Image

Overview

Quantity:	10 µg
Target:	WDFY3
Protein Characteristics:	AA 1-420
Origin:	Human
Source:	Wheat germ
Protein Type:	Recombinant
Purification tag / Conjugate:	This WDFY3 protein is labelled with GST tag.
Application:	Antibody Array (AA), Affinity Purification (AP), ELISA, Western Blotting (WB)

Product Details

Purpose:	WDFY3 (Human) Recombinant Protein (P01)
Sequence:	MGTSKEKAKT ATLKQALLGH TDTVTCATAS LAYHIIVSGS RDRTCIIWDL NKLSFLTQLR GHRAPVSALC INELTGDIVS CAGTYIHVWS INGNPIVSVN TFTGRSQQII CCCMSEMNEW DTQNVIVTGH SDGVVRFWRM EFLQVPETPA PEPAEVLEMQ EDCPEAQIGQ EAQDEDSSDS EADEQSISQD PKDTPSQPSS TSHRPRAASC RATAAWCTDS GSDDSRRWSD QLSLDEKDG IFVNYSEGQT RAHLQGPLSH PHPNPIEVN YSRLKPGYRW ERQLVFRSKL TMHTAFDRKD NAHPAEVTAL GISKDHSRIL VGDSRGRVFS WSVSDQPGRS AADHWVKDEG GDSCSGCSVR FSLTERRHHC RNCGQLFCQK CSRFQSEIKR LKISSPVRVC QNCYYNLQHE RGSSEDGPRNC
Characteristics:	Human WDFY3 full-length ORF (AAH15214, 1 a.a. - 420 a.a.) recombinant protein with GST-tag at N-terminal.
Purification:	in vitro wheat germ expression system

Target Details

Target:	WDFY3
Alternative Name:	WDFY3 (WDFY3 Products)
Background:	Full Gene Name: WD repeat and FYVE domain containing 3 Synonyms: ALFY,KIAA0993,MGC16461,ZFYVE25
Gene ID:	23001

Application Details

Application Notes:	Optimal working dilution should be determined by the investigator.
Comment:	Preparation method: in vitro, wheat germ expression system Product Quality tested by: 12.5% SDS-PAGE Stained with Coomassie Blue.
Restrictions:	For Research Use only

Handling

Buffer:	50 mM Tris-HCl, 10 mM reduced Glutathione, pH =8.0 in the elution buffer.
Handling Advice:	Aliquot to avoid repeated freezing and thawing.
Storage:	-80 °C
Storage Comment:	Best use within three months from the date of receipt of this protein.

Images

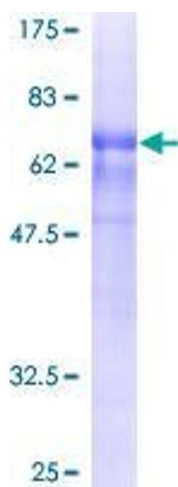


Image 1.