



[Go to Product page](#)

Datasheet for ABIN1325202

## WDR18 Protein (AA 1-432) (GST tag)

### 1 Image

#### Overview

Quantity:	10 µg
Target:	WDR18
Protein Characteristics:	AA 1-432
Origin:	Human
Source:	Wheat germ
Protein Type:	Recombinant
Purification tag / Conjugate:	This WDR18 protein is labelled with GST tag.
Application:	ELISA, Western Blotting (WB), Antibody Array (AA), Affinity Purification (AP)

#### Product Details

Purpose:	WDR18 (Human) Recombinant Protein (P01)
Sequence:	MAAPMEVAVC TDSAAPMWSC IVWELHSGAN LLTYRGGQAG PRGLALLNGE YLLAAQLGKN YISAWELQRK DQLQQKIMCP GPVTCLTASP NGLYVLAGVA ESIHLWEVST GNLLVILSRH YQDVSLQFT GDSSHFISSG KDCLVLVWVSL CSVLQADPSR IPAPRHVWSH HTLPITDLHC GFGGPLARVA TSSLDQTVKL WEVSSGELLL SVLFDVSIMA VTMDLAEHHM FCGGSEGSIF QVDLFTWPGQ RERSFHPEQD AGKVFKGHRN QVTCLSVSTD GSVLLSGSHD ETVRLWDVQS KQCIRTVALK GPVTNAAILL APVSMSSDF RPSLPLPHFN KHLGAEHGD EPRHGGLTLR LGLHQQGSEP SYLDRTEQLQ AVLCSTMEKS VLGGQDQLRV RVTELEDEVR NLRKINRDLF DFSTRFITRP AK
Characteristics:	Human WDR18 full-length ORF ( AAH01648.1, 1 a.a. - 432 a.a.) recombinant protein with GST-tag at N-terminal.

## Product Details

---

Purification: in vitro wheat germ expression system

## Target Details

---

Target: WDR18

Alternative Name: WDR18 ([WDR18 Products](#))

Background: Full Gene Name: WD repeat domain 18  
Synonyms: MGC2436,R32184\_1

Gene ID: 57418

## Application Details

---

Application Notes: Optimal working dilution should be determined by the investigator.

Comment: Preparation method: in vitro, wheat germ expression system  
Product Quality tested by: 12.5% SDS-PAGE Stained with Coomassie Blue.

Restrictions: For Research Use only

## Handling

---

Buffer: 50 mM Tris-HCl, 10 mM reduced Glutathione, pH =8.0 in the elution buffer.

Handling Advice: Aliquot to avoid repeated freezing and thawing.

Storage: -80 °C

Storage Comment: Best use within three months from the date of receipt of this protein.

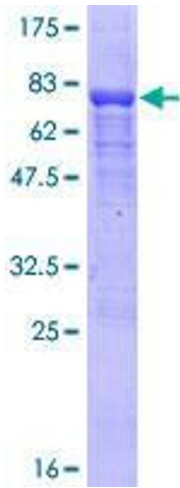


Image 1.