



[Go to Product page](#)

Datasheet for ABIN1325204

WDR19 Protein (AA 1-437) (GST tag)

1 Image

Overview

| | |
|-------------------------------|---|
| Quantity: | 10 µg |
| Target: | WDR19 |
| Protein Characteristics: | AA 1-437 |
| Origin: | Human |
| Source: | Wheat germ |
| Protein Type: | Recombinant |
| Purification tag / Conjugate: | This WDR19 protein is labelled with GST tag. |
| Application: | ELISA, Western Blotting (WB), Antibody Array (AA), Affinity Purification (AP) |

Product Details

| | |
|------------------|--|
| Purpose: | WDR19 (Human) Recombinant Protein (P01) |
| Sequence: | MKRIFSLLEK TWLGAPIQFA WQKTSGNLYA VTGADYIVKI FDRHGQKRSE INLPGNCVAM DWDKDGDLA VIAEKSSCIY LWDANTNKTS QLDNGMRDQM SFLWWSKVGS FLAVGTVKGN LLIYNHQTSR KIPVLGKHTK RITCGCWNAE NLLALGGEDK MITVSNQEGD TIRQTQVRSE PSNMQFFLMK MDDRTSAAES MISVVLGKKT LFFLNLNPD NPADLEFQQD FGNIVCYNWY GDGRIMIGFS CGHFVVISTH TGELGQEIQ ARNHKDNLTS IAVSQTLNKV ATCGDNCIKI QDLVDLKDMY VILNLDEENK GLGTLSTQDD GQLLALSTQR GSLHVFLTKL PILGDACSTR IAYLTSLLEV TVANPVEGEL PITVSDVEP NFVAVGLYHL AVGMNNRAWF YVLGENAVKK IERYGVS GNS SQYLPSF |
| Characteristics: | Human WDR19 full-length ORF (AAH32578.1, 1 a.a. - 437 a.a.) recombinant protein with GST-tag at N-terminal. |

Product Details

Purification: in vitro wheat germ expression system

Target Details

Target: WDR19

Alternative Name: WDR19 ([WDR19 Products](#))

Background: Full Gene Name: WD repeat domain 19
Synonyms: FLJ23127,KIAA1638,ORF26,PWDMP

Gene ID: 57728

Pathways: [Hedgehog Signaling](#)

Application Details

Application Notes: Optimal working dilution should be determined by the investigator.

Comment: Preparation method: in vitro, wheat germ expression system
Product Quality tested by: 12.5% SDS-PAGE Stained with Coomassie Blue.

Restrictions: For Research Use only

Handling

Buffer: 50 mM Tris-HCl, 10 mM reduced Glutathione, pH =8.0 in the elution buffer.

Handling Advice: Aliquot to avoid repeated freezing and thawing.

Storage: -80 °C

Storage Comment: Best use within three months from the date of receipt of this protein.

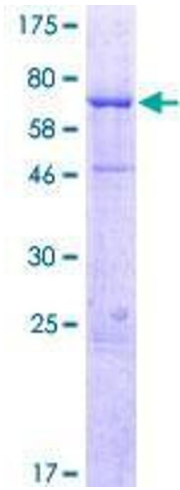


Image 1.