



[Go to Product page](#)

Datasheet for ABIN1325211

DCAF4L2 Protein (AA 1-395) (GST tag)

1 Image

Overview

Quantity:	10 µg
Target:	DCAF4L2
Protein Characteristics:	AA 1-395
Origin:	Human
Source:	Wheat germ
Protein Type:	Recombinant
Purification tag / Conjugate:	This DCAF4L2 protein is labelled with GST tag.
Application:	ELISA, Western Blotting (WB), Antibody Array (AA), Affinity Purification (AP)

Product Details

Purpose:	WDR21C (Human) Recombinant Protein (P01)
Sequence:	MESKRPRLL EADKQKKTVR VGLNAPSMLR KNQLGFLRFA NYCRIARELR VSCMQRKKVQ IHSWDPSSLA SDRFNRI LAN TNTDQLFTVN QVEAGGSKYG IITMRGLTTP ELRVYPHCTL YVPNRKVNSM CWASLNHLDS HLLLCFVGLA DTPSCAVLLP ASLFIGSFPG MRRPGMLCSF QIPDAWSCAW SLSIHAYHSF STGLSQQVLL TNVVTGHQQS FGTSSDVLAQ QFAIMTPLL F NGCRSGEIFG IDLR CGNQGS GWKAICLSHD SAVTSLQILQ DGQFLVSSDM TGTIKLWDLR ATKCVTQYEG HVNNSAYLPV HVNEEEGVVA AVGQDCYTRI WSLRHGHLLT TIPSPYPASE NDIPSVAFSS RLGGRGAPG LLMAVREDLY CFSYG
Characteristics:	Human WDR21C full-length ORF (NP_689631.1, 1 a.a. - 395 a.a.) recombinant protein with GST-tag at N-terminal.
Purification:	in vitro wheat germ expression system

Target Details

Target:	DCAF4L2
Alternative Name:	WDR21C (DCAF4L2 Products)
Background:	Full Gene Name: WD repeat domain 21C Synonyms: FLJ35775,MGC133227
Gene ID:	138009
NCBI Accession:	NM_152418

Application Details

Application Notes:	Optimal working dilution should be determined by the investigator.
Comment:	Preparation method: in vitro, wheat germ expression system Product Quality tested by: 12.5% SDS-PAGE Stained with Coomassie Blue.
Restrictions:	For Research Use only

Handling

Buffer:	50 mM Tris-HCl, 10 mM reduced Glutathione, pH =8.0 in the elution buffer.
Handling Advice:	Aliquot to avoid repeated freezing and thawing.
Storage:	-80 °C
Storage Comment:	Best use within three months from the date of receipt of this protein.

Images

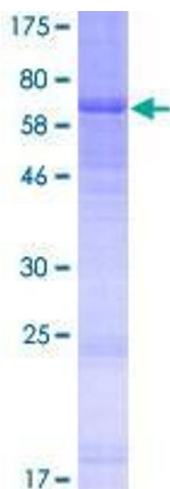


Image 1.