



[Go to Product page](#)

Datasheet for ABIN1325225
WDR34 Protein (AA 1-419) (GST tag)

1 Image

Overview

Quantity:	25 µg
Target:	WDR34
Protein Characteristics:	AA 1-419
Origin:	Human
Source:	Wheat germ
Protein Type:	Recombinant
Purification tag / Conjugate:	This WDR34 protein is labelled with GST tag.
Application:	ELISA, Western Blotting (WB), Antibody Array (AA), Affinity Purification (AP)

Product Details

Purpose:	WDR34 (Human) Recombinant Protein (P01)
Sequence:	MVIRELNKNW QSHAFDGFV NWTEQQMVS CLYTLGYPPA QAQGLHVTSI SWNSTGSVVA CAYGRLDHGD WSTLKSFVCA WNLDRRDLRP QQPSAVVEVP SAVLCLAFHP TQPSHVAGGL YSGEVLVWDL SRLEDPLLWR TGLTDDHTD PVSQVWLPE PGHSHRFQVL SVATDGKVLL WQGIGVGQLQ LTEGFALVMQ QLPRSTKLLK HPRGETEVGA TAVAFSS FDP RLFILGTEGG FPLKCSLAAG EAALTRMPSS VPLRAPAQFT FSPHGGPIYS VSCSPFHRNL FLSAGTDGHV HLYSMLQAPP LTSLQLSLKY LFAVRWSPVR PLVFAAASGK GDVQLFDLQK SSQKPTVLIK QTQDESPVYC LEFNSQQTQL LAAGDAQGT V KVVQLSTEFT EQGPREAEDL DCLAAEVAA
Characteristics:	Human WDR34 full-length ORF (ENSP00000361798, 1 a.a. - 419 a.a.) recombinant protein with GST-tag at N-terminal.
Purification:	in vitro wheat germ expression system

Target Details

Target:	WDR34
Alternative Name:	WDR34 (WDR34 Products)
Background:	Full Gene Name: WD repeat domain 34 Synonyms: MGC20486,RP11-216B9.5,bA216B9.3
Gene ID:	89891

Application Details

Application Notes:	Optimal working dilution should be determined by the investigator.
Comment:	Preparation method: in vitro, wheat germ expression system Product Quality tested by: 12.5% SDS-PAGE Stained with Coomassie Blue.
Restrictions:	For Research Use only

Handling

Buffer:	50 mM Tris-HCl, 10 mM reduced Glutathione, pH =8.0 in the elution buffer.
Handling Advice:	Aliquot to avoid repeated freezing and thawing.
Storage:	-80 °C
Storage Comment:	Best use within three months from the date of receipt of this protein.

Images

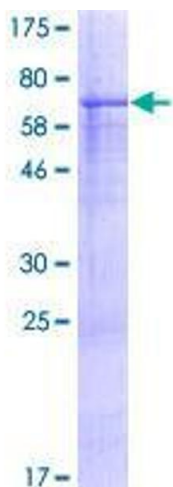


Image 1.