

Datasheet for ABIN1325226

## WDR36 Protein (AA 853-951) (GST tag)



[Go to Product page](#)

### 1 Image

#### Overview

|                               |   |
|-------------------------------|---|
| Quantity:                     | 10 µg   |
| Target:                       | WDR36   |
| Protein Characteristics:      | AA 853-951  |
| Origin:                       | Human   |
| Source:                       | Wheat germ  |
| Protein Type:                 | Recombinant   |
| Purification tag / Conjugate: | This WDR36 protein is labelled with GST tag.                                  |
| Application:                  | ELISA, Western Blotting (WB), Antibody Array (AA), Affinity Purification (AP) |

#### Product Details

|                  |   |
|------------------|---|
| Purpose:         | WDR36 (Human) Recombinant Protein (Q01)   |
| Sequence:        | SGIETELRSL SPDCGGSIEV MQSFLKMIGM MLDRKRDFEL AQAYLALFLK LHLKMLPSEP<br>VLLEEITNLS SQVEENWTHL QSLFNQSMCI LNYLKSALL |
| Characteristics: | Human WDR36 partial ORF (NP_644810, 853 a.a. - 951 a.a.) recombinant protein with GST-tag at N-terminal.        |
| Purification:    | in vitro wheat germ expression system   |

#### Target Details

|                   |  |
|-------------------|--|
| Target:           | WDR36                                    |
| Alternative Name: | WDR36 ( <a href="#">WDR36 Products</a> ) |

## Target Details

|                 |   |
|-----------------|---|
| Background:     | Full Gene Name: WD repeat domain 36<br>Synonyms: DKFZp686I1650, GLC1G, TA-WDRP, TAWDRP, UTP21 |
| Gene ID:        | 134430  |
| NCBI Accession: | <a href="#">NM_139281</a>   |
| Pathways:       | <a href="#">Regulation of Cell Size</a>   |

## Application Details

|                    |   |
|--------------------|---|
| Application Notes: | Optimal working dilution should be determined by the investigator.  |
| Comment:           | Preparation method: in vitro, wheat germ expression system<br>Product Quality tested by: 12.5% SDS-PAGE Stained with Coomassie Blue |
| Restrictions:      | For Research Use only   |

## Handling

|                  |   |
|------------------|---|
| Buffer:          | 50 mM Tris-HCl, 10 mM reduced Glutathione, pH =8.0 in the elution buffer. |
| Handling Advice: | Aliquot to avoid repeated freezing and thawing.                           |
| Storage:         | -80 °C  |
| Storage Comment: | Best use within three months from the date of receipt of this protein.    |

## Images

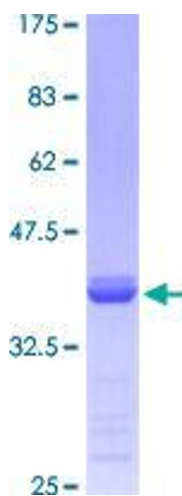


Image 1.