



[Go to Product page](#)

Datasheet for ABIN1325235

WDR46 Protein (AA 1-610) (GST tag)

1 Image

Overview

Quantity:	25 µg
Target:	WDR46
Protein Characteristics:	AA 1-610
Origin:	Human
Source:	Wheat germ
Protein Type:	Recombinant
Purification tag / Conjugate:	This WDR46 protein is labelled with GST tag.
Application:	ELISA, Western Blotting (WB), Antibody Array (AA), Affinity Purification (AP)

Product Details

Purpose:	WDR46 (Human) Recombinant Protein (P01)
Sequence:	METAPKPGKD VPPKKDKLQT KRKKPRRYWE EETVPTTAGA SPGPPRNKKN RELRPQRPKN AYILKKSRSI KKPQVPKKPR EWKNPESQRG LSGAQDPFPG PAPVPVEVVQ KFCRIDKSRK LPHSKAKTRS RLEVAEAESEE ETSIKAARSE LLLAEEPGLF EGEDGEDTAK ICQADIVEAV DIASAAKHFD LNLRFQGPYR LNYSRTGRHL AFGGRRGHVA ALDWVTKKLM CEINVMEAVR DIRFLHSEAL LAVAQNRWLH IYDNQGIELH CIRRCRVTR LEFLPFHFLF ATASETGFLT YLDVSVGKIV AALNARAGRL DVMSQNPYNA VIHLGHSNGT VSLWSPAMKE PLAKILCHRG GVRVAVDST GTYMATSGLD HQLKIFDLRG TYQPLSTRTL PHGAGHLAFS QRGLLVAGMG DVVNIWAGQG KASPPSLEQP YLTHRLSGPV HGLQFCPFED VLGVGHTGGI TSMLVPGAGE PNFDGLESNP YRSRQRQEW EVKALLEKVP AELICLDPRA LAEVDVISLE QGKKEQIERL GYDPQAKAPF QPKPKQKGRS STASLVKRKR KVMDEEHRDK VRQSLQQQHH KEAKAKPTGA RPSALDRFVR

Product Details

Characteristics: Human WDR46 full-length ORF (NP_005443.2, 1 a.a. - 610 a.a.) recombinant protein with GST-tag at N-terminal.

Purification: in vitro wheat germ expression system

Target Details

Target: WDR46

Alternative Name: WDR46 ([WDR46 Products](#))

Background: Full Gene Name: WD repeat domain 46
Synonyms: BING4,C6orf11,FP221

Gene ID: 9277

NCBI Accession: [NM_005452](#)

Application Details

Application Notes: Optimal working dilution should be determined by the investigator.

Comment: Preparation method: in vitro, wheat germ expression system
Product Quality tested by: 12.5% SDS-PAGE Stained with Coomassie Blue.

Restrictions: For Research Use only

Handling

Buffer: 50 mM Tris-HCl, 10 mM reduced Glutathione, pH =8.0 in the elution buffer.

Handling Advice: Aliquot to avoid repeated freezing and thawing.

Storage: -80 °C

Storage Comment: Best use within three months from the date of receipt of this protein.

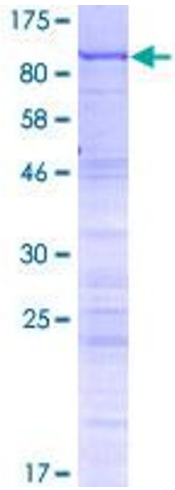


Image 1.