

Datasheet for ABIN1325236

WDR47 Protein (AA 1-920) (GST tag)



[Go to Product page](#)

1 Image

Overview

Quantity:	10 µg
Target:	WDR47
Protein Characteristics:	AA 1-920
Origin:	Human
Source:	Wheat germ
Protein Type:	Recombinant
Purification tag / Conjugate:	This WDR47 protein is labelled with GST tag.
Application:	ELISA, Western Blotting (WB), Antibody Array (AA), Affinity Purification (AP)

Product Details

Purpose:	WDR47 (Human) Recombinant Protein (P01)
Sequence:	MTAEETVNVK EVEIIKLILD FLNSKKLHIS MLALEKESGV INGLFSDDML FLRQLILDGQ WDEVLQFIQP LECMEKFDKK RFRYIILKQK FLEALCVNNA MSAEDEPQHL EFTMQEAVQC LHALEEYCPS KDDYSKLCLL LTLPRLTNHA EFKDWNPSTA RVHCFEEACV MVAEFIPADR KLSEAGFKAS NNRLFQLVMK GLLYECCVEF CQSKATGEEI TESEVLLGID LLCGNGCDDL DLSLLSWLQN LPSSVFSCAF EQKMLNIHVD KLLKPTKAAY ADLLTPLISK LSPYPSSPMR RPQSADAYMT RSLNPALDGL TCGLTSHDKR ISDLGNKTSP MSHSFANFHY PGVQNLRSRL MLENTECHSI YEESPERSDT PVDAQRPIGS EILGQSSVSE KEPANGAQNP GPAKQEKNEL RDSTEQFQEY YRQLRYQQH LEQKEQQRQI YQQMLLEGGV NQEDGPDQQQ NLTEQFLNRS IQKLGELNIG MDGLGNEVSA LNQQCNGSKG NGSNGSSVTS FTTPPDSSQ RLTHDASNIH TSTPRNPGST NHIPFLEESP CGSQISSEHS VIKPPLGDSP GLSRSKGEEDDKSKKQFVC INILEDTQAV RAVAFHPAGG LYAVGSNSKT LRVCAYPDVI DPSAHETPKQ PVVRFKRNKH

Product Details

HKGSYCVAVW SPCGQLLATG SNDKYVKVLP FNAETCNATG PDLEFSMHDG TIRDLAFMEG
PESGGAILIS AGAGDCNIYT TDCQRGQGLH ALSGHTGHIL ALYTWSGWMI ASGSQDKTVG
FWDLRVPSCA RVVGTTFHGT GSAVASVAVD PSGRLLATGQ EDSSCMLYDI RGGRMVQSYH
PHSSDVRSVR FSPGAHYLLT GSYDMKIKVT DLQGD LTKQL PIMVVGHEKD KVIQCRWHTQ
DLSFLSSSAD RTVTLWTYNG

Characteristics: Human WDR47 full-length ORF (NP_055784.2, 1 a.a. - 920 a.a.) recombinant protein with GST-tag at N-terminal.

Purification: in vitro wheat germ expression system

Target Details

Target: WDR47

Alternative Name: WDR47 ([WDR47 Products](#))

Background: Full Gene Name: WD repeat domain 47
Synonyms: FLJ90135,KIAA0893

Gene ID: 22911

NCBI Accession: [NM_014969](#)

Application Details

Application Notes: Optimal working dilution should be determined by the investigator.

Comment: Preparation method: in vitro, wheat germ expression system
Product Quality tested by: 12.5% SDS-PAGE Stained with Coomassie Blue.

Restrictions: For Research Use only

Handling

Buffer: 50 mM Tris-HCl, 10 mM reduced Glutathione, pH =8.0 in the elution buffer.

Handling Advice: Aliquot to avoid repeated freezing and thawing.

Storage: -80 °C

Storage Comment: Best use within three months from the date of receipt of this protein.

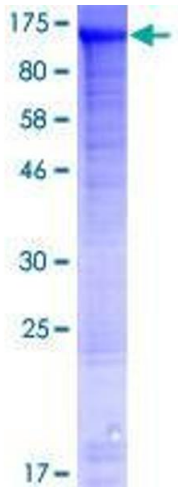


Image 1.