



[Go to Product page](#)

Datasheet for ABIN1325238

WDR48 Protein (AA 1-502) (GST tag)

1 Image

Overview

Quantity:	10 µg
Target:	WDR48
Protein Characteristics:	AA 1-502
Origin:	Human
Source:	Wheat germ
Protein Type:	Recombinant
Purification tag / Conjugate:	This WDR48 protein is labelled with GST tag.
Application:	ELISA, Western Blotting (WB), Antibody Array (AA), Affinity Purification (AP)

Product Details

Purpose:	WDR48 (Human) Recombinant Protein (P01)
Sequence:	MNQLGTIIVS GSTEKVLRVW DPRTCALKMK LKGHTDNVKA LLLNRDGTQC LSGSSDGTIR LWSLGQQRCI ATYRVHDEGV WALQVNDRAFT HVYSGGRDRK IYCTDLRNPDI IRVLICEEKA PVLKMEIDRS ADPPPAIWVA TTKSTVNKWT LKGIHNFAS GDYDNDCTNP ITPLCTQPDQ VIKGGASIIQ CHILNDRHI LTKDTNNNVA YWDVLKACKV EDLGKVFED EIKKRFKVMY VPNWFSDLK TGMLTITLDE SDCFAAWVSA KDAGFSSPDG SDPKLNLGGL LLQALLEYWP RTHVNPMDDEE ENEVNHVNGE QENRVQKNG YFQVPPHTPV IFGEAGGRTL FRLLCRDSGG ETESMLLNET VPQWVIDITV DKNMPKFENKI PFYLQPHASS GAKTLKKDRL SASDMLQVRK VMEHVYEKII NLDNESQTTS SSNNEKPGEQ EKEEDIAVLA EEKIELLCQD QVLDPNMDLR TVKHFIWKSG GDLTLLHYRQK ST
Characteristics:	Human WDR48 full-length ORF (AAH37168.1, 1 a.a. - 502 a.a.) recombinant protein with GST-tag at N-terminal.

Product Details

Purification: in vitro wheat germ expression system

Target Details

Target: WDR48

Alternative Name: WDR48 ([WDR48 Products](#))

Background: Full Gene Name: WD repeat domain 48
Synonyms: DKFZp686G1794,KIAA1449,P80

Gene ID: 57599

Application Details

Application Notes: Optimal working dilution should be determined by the investigator.

Comment: Preparation method: in vitro, wheat germ expression system
Product Quality tested by: 12.5% SDS-PAGE Stained with Coomassie Blue.

Restrictions: For Research Use only

Handling

Buffer: 50 mM Tris-HCl, 10 mM reduced Glutathione, pH =8.0 in the elution buffer.

Handling Advice: Aliquot to avoid repeated freezing and thawing.

Storage: -80 °C

Storage Comment: Best use within three months from the date of receipt of this protein.

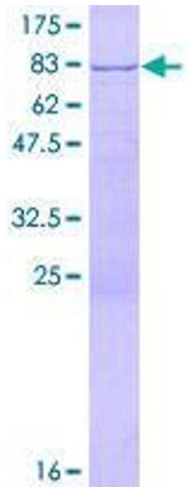


Image 1.