



[Go to Product page](#)

Datasheet for ABIN1325253
WDR59 Protein (AA 1-571) (GST tag)

1 Image

Overview

Quantity:	10 µg
Target:	WDR59
Protein Characteristics:	AA 1-571
Origin:	Human
Source:	Wheat germ
Protein Type:	Recombinant
Purification tag / Conjugate:	This WDR59 protein is labelled with GST tag.
Application:	ELISA, Western Blotting (WB), Antibody Array (AA), Affinity Purification (AP)

Product Details

Purpose:	WDR59 (Human) Recombinant Protein (P01)
Sequence:	<p>MAARWSSENV VVEFRDSQAT AMSVDCLGQH AVLSGRRFLY IVNLDAPFEG HRKISRQSKW DIGAVQWNPH DSFAHYFAAS SNQRVDLYKW KDGSGEVGT LQGHTRVISD LDWAVFEPDL LVTSSVDTYI YIWDIKDTRK PTVALSAVAG ASQVKWNKKN ANCLATSHDG DVRIWDKRKP STAVEYLA AH LSKIHGLDWH PDSEHILATS SQDNSVKFWD YRQPRKYLNI LPCQVPVWKA RYTPFSNGLV TVMVPQLRRE NSLLLWNVFD LNTPVHTFVG HDDVVLEFQW RKQKEGSKDY QLVTWSRDQT LRMWRVDSQM QRLCANDILD GVDEFIESIS LLPEPEKTLH TEDTDHQHTA SHGEEEALKE DPPRNLEER KSDQLGLPQT LQQEFSLINV QIRNVNEMD AADRSC TVSV HCSNHRVKML VKFPAQYPNN AAPSFQFINP TTITSTMKAK LLKILKDTAL QKVKRGQSCL EPCLRQLVSC LESFVNQEDS ASSNPFALPN SVTPPLPTFA RVTTAYGSYQ DANIPFPRTS GARFCGAGYL VYFTRPMTMH RAVSPTEPTP R</p>
Characteristics:	Human WDR59 full-length ORF (AAH04519.1, 1 a.a. - 571 a.a.) recombinant protein with GST-

Product Details

tag at N-terminal.

Purification: in vitro wheat germ expression system

Target Details

Target: WDR59

Alternative Name: WDR59 ([WDR59 Products](#))

Background: Full Gene Name: WD repeat domain 59
Synonyms: FLJ12270,FP977,MGC11230

Gene ID: 79726

Application Details

Application Notes: Optimal working dilution should be determined by the investigator.

Comment: Preparation method: in vitro, wheat germ expression system
Product Quality tested by: 12.5% SDS-PAGE Stained with Coomassie Blue.

Restrictions: For Research Use only

Handling

Buffer: 50 mM Tris-HCl, 10 mM reduced Glutathione, pH =8.0 in the elution buffer.

Handling Advice: Aliquot to avoid repeated freezing and thawing.

Storage: -80 °C

Storage Comment: Best use within three months from the date of receipt of this protein.

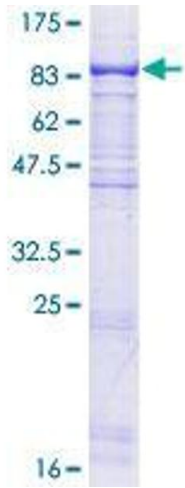


Image 1.