



[Go to Product page](#)

Datasheet for ABIN1325277

## WDR77 Protein (AA 1-342) (GST tag)

### 1 Image

#### Overview

Quantity:	10 µg
Target:	WDR77
Protein Characteristics:	AA 1-342
Origin:	Human
Source:	Wheat germ
Protein Type:	Recombinant
Purification tag / Conjugate:	This WDR77 protein is labelled with GST tag.
Application:	ELISA, Western Blotting (WB), Antibody Array (AA), Affinity Purification (AP)

#### Product Details

Purpose:	MEP50 (Human) Recombinant Protein (P01)
Sequence:	MRKETPPPLV PPAAREWNLP PNAPACMERQ LEAARYRSDG ALLLGASSLS GRCWAGSLWL FKDPCAAPNE GFCSAGVQTE AGVADLTWVG ERGILVASDS GAVELWELDE NETLIVSKFC KYEHDDIVST VSVLSSGTQA VSGSKDICIK VWDLAQQVVL SSYRAHAAQV TCVAASPHKD SVFLSCSEDN RILLWDTRCP KPASQIGCSA PGYLPTSLAW HPQQSEVVFV GDENGTVSLV DTKSTSCVLS SAVHSQCVTG LVFSPHSVPF LASLSEDCSL AVLDSSLSEL FRSQAHRDFV RDATWSPLNH SLLTTVGWDH QVVHHVVPTE PLPAPGPASV TE
Characteristics:	Human MEP50 full-length ORF ( AAH01679, 1 a.a. - 342 a.a.) recombinant protein with GST-tag at N-terminal.
Purification:	in vitro wheat germ expression system

## Target Details

Target:	WDR77
Alternative Name:	WDR77 ( <a href="#">WDR77 Products</a> )
Background:	Full Gene Name: WD repeat domain 77 Synonyms: HKMT1069,MEP50,MGC2722,Nbla10071,RP11-552M11.3,p44
Gene ID:	79084
Pathways:	<a href="#">Ribonucleoprotein Complex Subunit Organization</a>

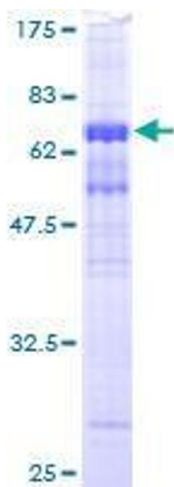
## Application Details

Application Notes:	Optimal working dilution should be determined by the investigator.
Comment:	Preparation method: in vitro, wheat germ expression system Product Quality tested by: 12.5% SDS-PAGE Stained with Coomassie Blue.
Restrictions:	For Research Use only

## Handling

Buffer:	50 mM Tris-HCl, 10 mM reduced Glutathione, pH =8.0 in the elution buffer.
Handling Advice:	Aliquot to avoid repeated freezing and thawing.
Storage:	-80 °C
Storage Comment:	Best use within three months from the date of receipt of this protein.

## Images



### SDS-PAGE

Image 1.