



[Go to Product page](#)

Datasheet for ABIN1325284

## WDR82 Protein (AA 1-137) (GST tag)

### 1 Image

#### Overview

Quantity:	10 µg
Target:	WDR82
Protein Characteristics:	AA 1-137
Origin:	Human
Source:	Wheat germ
Protein Type:	Recombinant
Purification tag / Conjugate:	This WDR82 protein is labelled with GST tag.
Application:	ELISA, Western Blotting (WB), Antibody Array (AA), Affinity Purification (AP)

#### Product Details

Purpose:	TMEM113 (Human) Recombinant Protein (P01)
Sequence:	MPSLPTTNCV HSLQMIPPLS PAPANQELVLG LCYMSYLAFL YMTDFDCCLY FSTVYAPSFK YICVHTDTHI CVCVCIYLSS VVKSSAEAD GVLQPRRHPA SLLIVFATSI SESSLLIFSF QKTEAKLIVF AVSLAAK
Characteristics:	Human TMEM113 full-length ORF ( NP_079498.1, 1 a.a. - 137 a.a.) recombinant protein with GST-tag at N-terminal.
Purification:	in vitro wheat germ expression system

#### Target Details

Target:	WDR82
Alternative Name:	WDR82 ( <a href="#">WDR82 Products</a> )

## Target Details

Background:	Gene: WD repeat domain 82 Synonyms: MST107, MSTP107, PRO2730, PRO34047, SWD2, TMEM113, WDR82A
Gene ID:	80335
NCBI Accession:	<a href="#">NM_025222</a>

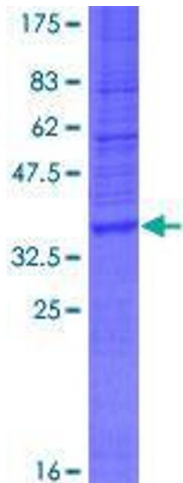
## Application Details

Application Notes:	Optimal working dilution should be determined by the investigator.
Restrictions:	For Research Use only

## Handling

Buffer:	50 mM Tris-HCl, 10 mM reduced Glutathione, pH =8.0 in the elution buffer.
Handling Advice:	Aliquot to avoid repeated freezing and thawing.
Storage:	-80 °C
Storage Comment:	Best use within three months from the date of receipt of this protein.

## Images



**Image 1.**