



[Go to Product page](#)

Datasheet for ABIN1325288

WDR89 Protein (AA 1-387) (GST tag)

1 Image

Overview

Quantity:	10 µg
Target:	WDR89
Protein Characteristics:	AA 1-387
Origin:	Human
Source:	Wheat germ
Protein Type:	Recombinant
Purification tag / Conjugate:	This WDR89 protein is labelled with GST tag.
Application:	ELISA, Western Blotting (WB), Antibody Array (AA), Affinity Purification (AP)

Product Details

Purpose:	WDR89 (Human) Recombinant Protein (P01)
Sequence:	MEKIEEQFAN LHIVKCSLGT KEPTYLLGID TSKTVQAGKE NLVAVLCSNG SIRIYDKERL NVLREFSGYP GLLNGVRFAN SCDSVYSACT DGTVKCWDAR VAREKPVQLF KGYP SNIFIS FDINCNDHII CAGTEKVDDD ALLVFW DARM NSQNLSTTKD SLGAYSETHS DDVTQVRFHP SNPNMVVSGS SDGLVNVFDI NIDNEEDALV TTCNSISSVS CIGWSGKGYK QIYCMTHDEG FYWWDLNHLD TDEPVTRLNI QDVREVN MK EDALDY LIGG LYHEKTD TLH VIGGTNKGRI HLMNCSMSGL THVTS LQGGH AATVRSFCWN VQD D SLLTGG EDAQ LLLWKP GAIEKTFTKK ESMKIASSVH QRVRVHSNDS YKRRKKQ
Characteristics:	Human WDR89 full-length ORF (NP_001008726.1, 1 a.a. - 387 a.a.) recombinant protein with GST-tag at N-terminal.
Purification:	in vitro wheat germ expression system

Target Details

Target:	WDR89
Alternative Name:	WDR89 (WDR89 Products)
Background:	Full Gene Name: WD repeat domain 89 Synonyms: C14orf150,MGC9907,MSTP050
Gene ID:	112840
NCBI Accession:	NM_001008726

Application Details

Application Notes:	Optimal working dilution should be determined by the investigator.
Comment:	Preparation method: in vitro, wheat germ expression system Product Quality tested by: 12.5% SDS-PAGE Stained with Coomassie Blue.
Restrictions:	For Research Use only

Handling

Buffer:	50 mM Tris-HCl, 10 mM reduced Glutathione, pH =8.0 in the elution buffer.
Handling Advice:	Aliquot to avoid repeated freezing and thawing.
Storage:	-80 °C
Storage Comment:	Best use within three months from the date of receipt of this protein.

Images

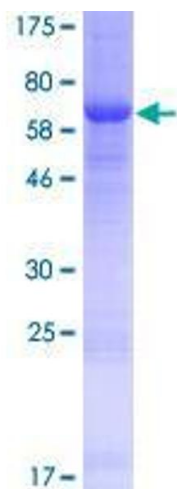


Image 1.