

Datasheet for ABIN1325290
WDR90 Protein (AA 1-299) (GST tag)



[Go to Product page](#)

1 Image

Overview

Quantity:	10 µg
Target:	WDR90
Protein Characteristics:	AA 1-299
Origin:	Human
Source:	Wheat germ
Protein Type:	Recombinant
Purification tag / Conjugate:	This WDR90 protein is labelled with GST tag.
Application:	Western Blotting (WB), Antibody Array (AA), Affinity Purification (AP), ELISA

Product Details

Purpose:	WDR90 (Human) Recombinant Protein (P01)
Sequence:	MLWFGQPGPG GWNRKCLRPF TLPRGQHPQP SYGFPQVNEV VFSPGESHCA TCSEDGSRV WALASMELVI QFQVLNQSCL CLAWSPPCCG RPEQQLAAG YGDGSLRIFS VSRTAMELKM HPHPVALTTV AFSTDGQTVL SGDKDGLVAV SHPCTGTTFR VLSDHQGAPI STICVTCKET QGHLPPSLAA FCPWDGALLM YVGPVYKEV IYNLCQKQV VEKIPLPFFA MSLSLSPGTH LLAVGFAECM LRLVDCAMGT AQDFAGHDNA VHLCRFTPSA RLLFTAARNE ILVWEVPGL
Characteristics:	Human WDR90 full-length ORF (AAH65836.1, 1 a.a. - 299 a.a.) recombinant protein with GST-tag at N-terminal.
Purification:	in vitro wheat germ expression system

Target Details

Target:	WDR90
Alternative Name:	WDR90 (WDR90 Products)
Background:	Full Gene Name: WD repeat domain 90 Synonyms: C16orf15,C16orf16,C16orf17,C16orf18,C16orf19,FLJ36483,FLJ44660,KIAA1924
Gene ID:	197335

Application Details

Application Notes:	Optimal working dilution should be determined by the investigator.
Comment:	Preparation method: in vitro, wheat germ expression system Product Quality tested by: 12.5% SDS-PAGE Stained with Coomassie Blue.
Restrictions:	For Research Use only

Handling

Buffer:	50 mM Tris-HCl, 10 mM reduced Glutathione, pH =8.0 in the elution buffer.
Handling Advice:	Aliquot to avoid repeated freezing and thawing.
Storage:	-80 °C
Storage Comment:	Best use within three months from the date of receipt of this protein.

Images

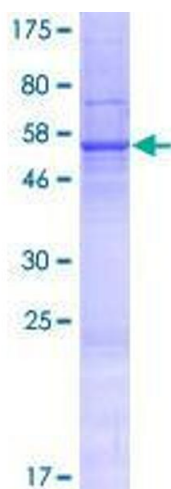


Image 1.