



[Go to Product page](#)

Datasheet for ABIN1325299

WDTC1 Protein (AA 1-676) (GST tag)

1 Image

Overview

Quantity:	10 µg
Target:	WDTC1 (Wdtd1)
Protein Characteristics:	AA 1-676
Origin:	Human
Source:	Wheat germ
Protein Type:	Recombinant
Purification tag / Conjugate:	This WDTC1 protein is labelled with GST tag.
Application:	ELISA, Western Blotting (WB), Antibody Array (AA), Affinity Purification (AP)

Product Details

Purpose:	WDTC1 (Human) Recombinant Protein (P01)
Sequence:	MAKVNITRDL IRRQIKERGA LSFERRYHVT DPFIRRLGLE AELQGHSGCV NCLEWNEKGD LLASGSDDQH TIVWDPLHHK KLLSMHTGHT ANIFSVKFLP HAGDRILITG AADSKVHVHD LTVKETIHMFGDHTNRVKRI ATAPMWPNTF WSAEEDGLIR QYDLRENSKH SEVLIDLTEY CGQLVEAKCL TVNPQDNNCL AVGASGPFVR LYDIRMIHNN RKSMKQSPSA GVHTFCDRQK PLPDGAAQYY VAGHLPVKLP DYNRRLRVLV ATYVTFSPNG TELLVNMGGG QVYLFDLTYK QRPYTFLLPR KCHSSGVQNG KMSTNGVSNG VSNGLHLHSN GFRLPESRGH VSPQVELPPY LERVKQQANE AFACQQWTQA IQLYSKAVQR APHNAMLYGN RAAAYMKRKY DGDHYDALRD CLKAISLNPC HLKAHFRLAR CLFELKYVAE ALECLDDFKG KFPEQAHSSA CDALGRDITA ALFSKNDGEE KKGPGGGAPV RLRSTSRKDS ISEDEMVLRE RSYDYQFRYC GHCNTTTTDIK EANFFGSNAQ YIVSGSDDGS FFIWEKETT N LVRVLQGDDES IVNCLQPHPS YCFLATSGID PVVRLWNPRP ESEDLTGRVV EDMEGASQAN QRRMNADPLE VMLLNMGYRI TGLSSGGAGA

Product Details

SDDEDSSEGG VQCRPS

Characteristics: Human WDTC1 full-length ORF (NP_055838.2, 1 a.a. - 676 a.a.) recombinant protein with GST-tag at N-terminal.

Purification: in vitro wheat germ expression system

Target Details

Target: WDTC1 (Wdtd1)

Alternative Name: WDTC1 ([Wdtd1 Products](#))

Background: Full Gene Name: WD and tetratricopeptide repeats 1
Synonyms: ADP,KIAA1037

Gene ID: 23038

NCBI Accession: [NM_015023](#)

Application Details

Application Notes: Optimal working dilution should be determined by the investigator.

Comment: Preparation method: in vitro, wheat germ expression system
Product Quality tested by: 12.5% SDS-PAGE Stained with Coomassie Blue.

Restrictions: For Research Use only

Handling

Buffer: 50 mM Tris-HCl, 10 mM reduced Glutathione, pH =8.0 in the elution buffer.

Handling Advice: Aliquot to avoid repeated freezing and thawing.

Storage: -80 °C

Storage Comment: Best use within three months from the date of receipt of this protein.

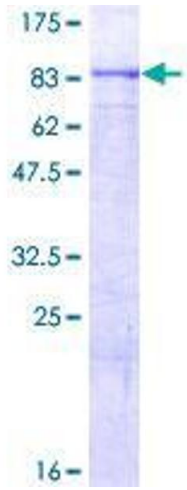


Image 1.