



[Go to Product page](#)

Datasheet for ABIN1325324

## WHSC1L1 Protein (AA 1-645) (GST tag)

### 1 Image

#### Overview

Quantity:	25 µg
Target:	WHSC1L1
Protein Characteristics:	AA 1-645
Origin:	Human
Source:	Wheat germ
Protein Type:	Recombinant
Purification tag / Conjugate:	This WHSC1L1 protein is labelled with GST tag.
Application:	ELISA, Western Blotting (WB), Antibody Array (AA), Affinity Purification (AP)

#### Product Details

Purpose:	WHSC1L1 (Human) Recombinant Protein (P01)
Sequence:	<p>MDFSFSFMQG IMGNTIQPP QLIDSANIRQ EDAFDNNSDI AEDGGQTPYE ATLQQGFQYP          ATTEDLPPLT NGYPSSISVY ETQTKYQSYN QYPNGSANGF GAVRNFSPTD YYHSEIPNTR          PHEILEKPSP PQPPPPPSVP QTVIPKKTGS PEIKLKITKT IQNGRELFES SLCGDLLNEV          QASEHTKSKH ESRKEKRKKS NKHDSSRSEE RKSHKIPKLE PEEQNRPNR VDTVSEKPRE          EPVLKEEAPV QPILSSVPTT EVSTGVKFQV GDLVWSKVG TYPWWPCMVSS DPQLEVHTKI          NTRGAREYHV QFFSNQPERA WVHEKRVREY KGHKQYEELL AEATKQASNH SEKQKIRKPR          PQRERAQWDI GIAHAEKALK MTREERIEQY TFIYIDKQPE EALSQAKKSV ASKTEVKKTR          RPRSVLNTQP EQTNAGEVAS SLSSTEIRRH SQRRTSAEE EEPVVKIAW KTAARKSLP          ASITMHKGS DLQKCNMSPV VKIEQVFALQ NATGDGKFID QFVYSTKGIG NKTEISVRGQ          DRLIISTPNQ RNEKPTQSVS SPEATSGSTG SVEKKQRRS IRTRESEKS TEVVPKKKIK          KEQVETVPA TVKTGLQKGS ADRGVQGSVR FSDSSVSAI EETVD</p>

## Product Details

---

Characteristics: Human WHSC1L1 full-length ORF ( NP\_060248.2, 1 a.a. - 645 a.a.) recombinant protein with GST-tag at N-terminal.

Purification: in vitro wheat germ expression system

---

## Target Details

---

Target: WHSC1L1

Alternative Name: WHSC1L1 ([WHSC1L1 Products](#))

Background: Full Gene Name: Wolf-Hirschhorn syndrome candidate 1-like 1  
Synonyms: DKFZp667H044,FLJ20353,MGC126766,MGC142029,NSD3,pp14328

Gene ID: 54904

NCBI Accession: [NM\\_017778](#)

---

## Application Details

---

Application Notes: Optimal working dilution should be determined by the investigator.

Comment: Preparation method: in vitro, wheat germ expression system  
Product Quality tested by: 12.5% SDS-PAGE Stained with Coomassie Blue.

Restrictions: For Research Use only

---

## Handling

---

Buffer: 50 mM Tris-HCl, 10 mM reduced Glutathione, pH =8.0 in the elution buffer.

Handling Advice: Aliquot to avoid repeated freezing and thawing.

Storage: -80 °C

Storage Comment: Best use within three months from the date of receipt of this protein.

---

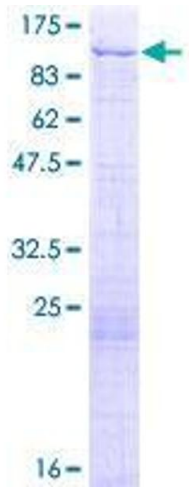


Image 1.