



[Go to Product page](#)

Datasheet for ABIN1325331

## WIF1 Protein (AA 29-138) (GST tag)

### 1 Image

#### Overview

Quantity:	10 µg
Target:	WIF1
Protein Characteristics:	AA 29-138
Origin:	Human
Source:	Wheat germ
Protein Type:	Recombinant
Purification tag / Conjugate:	This WIF1 protein is labelled with GST tag.
Application:	Western Blotting (WB), ELISA, Antibody Array (AA), Affinity Purification (AP)

#### Product Details

Purpose:	WIF1 (Human) Recombinant Protein (Q01)
Sequence:	GPPQEESLYL WIDAHQARVL IGFEEDILIV SEGKMAPFTH DFRKAQQRMP AIPVNIHSMN FTWQAAGQAE YFYEFSLRS LDKGIMADPT VNVPLLGTVP HKASVVQVGF
Characteristics:	Human WIF1 partial ORF ( NP_009122, 29 a.a. - 138 a.a.) recombinant protein with GST-tag at N-terminal.
Purification:	in vitro wheat germ expression system

#### Target Details

Target:	WIF1
Alternative Name:	WIF1 ( <a href="#">WIF1 Products</a> )

## Target Details

Background:	Full Gene Name: WNT inhibitory factor 1 Synonyms: WIF-1
Gene ID:	11197
NCBI Accession:	<a href="#">NM_007191</a>
Pathways:	<a href="#">WNT Signaling</a> , <a href="#">Positive Regulation of fat Cell Differentiation</a>

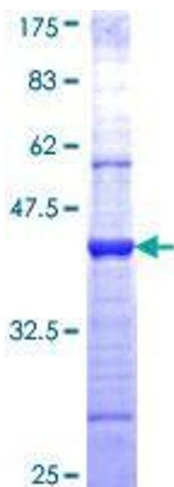
## Application Details

Application Notes:	Optimal working dilution should be determined by the investigator.
Comment:	Preparation method: in vitro, wheat germ expression system Product Quality tested by: 12.5% SDS-PAGE Stained with Coomassie Blue.
Restrictions:	For Research Use only

## Handling

Buffer:	50 mM Tris-HCl, 10 mM reduced Glutathione, pH =8.0 in the elution buffer.
Handling Advice:	Aliquot to avoid repeated freezing and thawing.
Storage:	-80 °C
Storage Comment:	Best use within three months from the date of receipt of this protein.

## Images



**Image 1.**