



[Go to Product page](#)

Datasheet for ABIN1325339

WIPI2 Protein (AA 1-454) (GST tag)

1 Image

Overview

Quantity:	10 µg
Target:	WIPI2
Protein Characteristics:	AA 1-454
Origin:	Human
Source:	Wheat germ
Protein Type:	Recombinant
Purification tag / Conjugate:	This WIPI2 protein is labelled with GST tag.
Application:	ELISA, Western Blotting (WB), Antibody Array (AA), Affinity Purification (AP)

Product Details

Purpose:	WIPI2 (Human) Recombinant Protein (P01)
Sequence:	MNLAQSOGEA GAGQLLFANF NQDNTEVKGA SRAAGLRRA VVWSLAVGSK SGYKFFSLSS VDKLEQIYEC TDTEVCIVE RLFSSSLVAI VSLKAPRKLK VCHFKKGTEI CNYSYSNTIL AVKLNQRQLI VCLEESLYIH NIRDMKVLHT IRETPPNPAG LCALSINNDN CYLAYPGSAT IGEYQVFDTI NLRAANMIPA HDSPLAALAF DASGTLATA SEKGTVIRVF SIPEGQKLFE FRRGVKRCVS ICSLAFSMDG MFLSASSNTE TVHIFKLETV KEKPPEPTT WTGYFGKVLV ASTSYLPSQV TEMFNQGRAF ATVRLPFCGH KNICSLATIQ KIPRLLVGAA DGYLYMYNLD PQEGGECALM KQHRLDGSLE TTNEILDSAS HDCPLVTQTY GAAAGKGTIV PSSPTRLAYT DDLGA VGGAC LEDEASALRL DEDSEHPPMI LRTD
Characteristics:	Human WIPI2 full-length ORF (NP_056425.1, 1 a.a. - 454 a.a.) recombinant protein with GST-tag at N-terminal.

Product Details

Purification: in vitro wheat germ expression system

Target Details

Target: WIPI2

Alternative Name: WIPI2 ([WIPI2 Products](#))

Background: Full Gene Name: WD repeat domain, phosphoinositide interacting 2
Synonyms: Atg21, CGI-
50, DKFZp434J154, DKFZp686P02188, FLJ12979, FLJ14217, FLJ42984, WIPI-2

Gene ID: 26100

NCBI Accession: [NM_015610](#)

Application Details

Application Notes: Optimal working dilution should be determined by the investigator.

Comment: Preparation method: in vitro, wheat germ expression system
Product Quality tested by: 12.5% SDS-PAGE Stained with Coomassie Blue.

Restrictions: For Research Use only

Handling

Buffer: 50 mM Tris-HCl, 10 mM reduced Glutathione, pH =8.0 in the elution buffer.

Handling Advice: Aliquot to avoid repeated freezing and thawing.

Storage: -80 °C

Storage Comment: Best use within three months from the date of receipt of this protein.

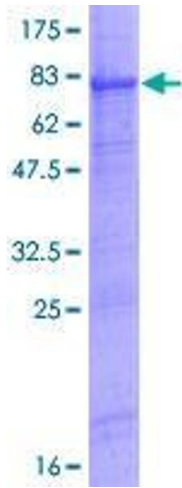


Image 1.