



[Go to Product page](#)

Datasheet for ABIN1325368
WNT6 Protein (AA 1-365) (GST tag)

1 Image

Overview

Quantity:	25 µg
Target:	WNT6
Protein Characteristics:	AA 1-365
Origin:	Human
Source:	Wheat germ
Protein Type:	Recombinant
Purification tag / Conjugate:	This WNT6 protein is labelled with GST tag.
Application:	ELISA, Western Blotting (WB), Antibody Array (AA), Affinity Purification (AP)

Product Details

Purpose:	WNT6 (Human) Recombinant Protein (P01)
Sequence:	MLPPLPSRLG LLLLLLLCPA HVGGLWWAVG SPLVMDPTSI CRKARRLAGR QAELCQAEPE VVAELARGAR LGVRECQFQF RFRRWNCSSH SKAFGRILQQ DIRETAFVFA ITAAGASHAV TQACSMGELL QCGCQAPRGR APPRPSGLPG TPGPPGPAGS PEGSAAWEWG GCGDDVDFGD EKSRLFMDAR HKRGRGDIRA LVQLHNNEAG RLAVRSHTRT ECKCHGLSGS CALRTCWQKL PPFREVGARL LERFHGASRV MGTNDGKALL PAVRTLKPPG RADLLYAADS PDFCAPNRRT GSPGTRGRAC NSSAPDLSGC DLLCCGRGHR QESVQLEENC LCRFWCCVW QCHRCRVRKE LSLCL
Characteristics:	Human WNT6 full-length ORF (NP_006513.1, 1 a.a. - 365 a.a.) recombinant protein with GST-tag at N-terminal.
Purification:	in vitro wheat germ expression system

Target Details

Target:	WNT6
Alternative Name:	WNT6 (WNT6 Products)
Background:	Full Gene Name: wingless-type MMTV integration site family, member 6 Synonyms:
Gene ID:	7475
NCBI Accession:	NM_006522
Pathways:	WNT Signaling, Tube Formation

Application Details

Application Notes:	Optimal working dilution should be determined by the investigator.
Comment:	Preparation method: in vitro, wheat germ expression system Product Quality tested by: 12.5% SDS-PAGE Stained with Coomassie Blue.
Restrictions:	For Research Use only

Handling

Buffer:	50 mM Tris-HCl, 10 mM reduced Glutathione, pH =8.0 in the elution buffer.
Handling Advice:	Aliquot to avoid repeated freezing and thawing.
Storage:	-80 °C
Storage Comment:	Best use within three months from the date of receipt of this protein.

Images

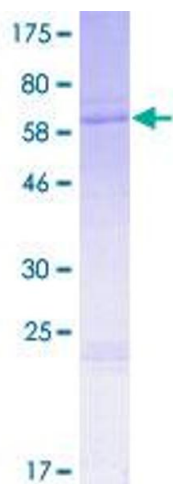


Image 1.