

Datasheet for ABIN1325380
RECQL2 Protein (AA 1322-1432) (GST tag)



[Go to Product page](#)

1 Image

1 Publication

Overview

Quantity:	2 µg
Target:	RECQL2 (WRN)
Protein Characteristics:	AA 1322-1432
Origin:	Human
Source:	Wheat germ
Protein Type:	Recombinant
Purification tag / Conjugate:	This RECQL2 protein is labelled with GST tag.
Application:	ELISA, Western Blotting (WB), Antibody Array (AA), Affinity Purification (AP)

Product Details

Purpose:	WRN (Human) Recombinant Protein (Q01)
Sequence:	NPPVNSDMSK ISLIRMLAPE NIDTYLIHMA IEILKHGPDS GLQPSCDVNK RRCFPGSEEI CSSSKRSKEE VGINDETSSA ERKRRLPVWF AKGSDTSKKL MDKTKRGGLF S
Characteristics:	Human WRN partial ORF (NP_000544, 1322 a.a. - 1432 a.a.) recombinant protein with GST-tag at N-terminal.
Purification:	in vitro wheat germ expression system

Target Details

Target:	RECQL2 (WRN)
Alternative Name:	WRN (WRN Products)

Target Details

Background:	Gene: Werner syndrome Synonyms: DKFZp686C2056, RECQ3, RECQL2, RECQL3
Gene ID:	7486
NCBI Accession:	NM_000553
Pathways:	DNA Damage Repair

Application Details

Application Notes:	Optimal working dilution should be determined by the investigator.
Restrictions:	For Research Use only

Handling

Buffer:	50 mM Tris-HCl, 10 mM reduced Glutathione, pH =8.0 in the elution buffer.
Handling Advice:	Aliquot to avoid repeated freezing and thawing.
Storage:	-80 °C
Storage Comment:	Best use within three months from the date of receipt of this protein.

Publications

Product cited in:	Sadahira, Sugihara, Fujiwara, Nishimura, Suetsugu, Takeshita, Okamura, Goto: "WRN protein as a novel erythroblast immunohistochemical marker with applications for the diagnosis of Werner syndrome." in: Virchows Archiv : an international journal of pathology , Vol. 466, Issue 3, pp. 343-50, (2015) (PubMed).
-------------------	--

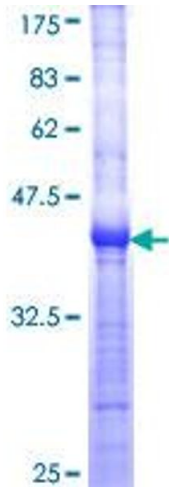


Image 1.