

Datasheet for ABIN1325390

WSCD1 Protein (AA 1-575) (GST tag)



[Go to Product page](#)

1 Image

Overview

Quantity:	25 µg
Target:	WSCD1
Protein Characteristics:	AA 1-575
Origin:	Human
Source:	Wheat germ
Protein Type:	Recombinant
Purification tag / Conjugate:	This WSCD1 protein is labelled with GST tag.
Application:	ELISA, Western Blotting (WB), Antibody Array (AA), Affinity Purification (AP)

Product Details

Purpose:	WSCD1 (Human) Recombinant Protein (P01)
Sequence:	<p>MAKPFRLQK FLRRTQFLF FLTAAYLMTG SLLLLQVRV ALPQGPRAPG PLQTLPVAAV ALGVLLDSR ALHDPVSPE LLLGVDMLQS PLTRPRGPR WLRSRNSLR QLRRRWFHHF MSDSQPPAL GPEARPAIH SRGTYIGCFS DDGHERTLKG AVFYDLRKMT VSHCQDACAE RSYVYAGLEA GAECYCGNRL PAVSVGLEEC NYECKGEKGS VCGAVDRLSV YRVDELQPGS RKRRATYRG CFRLPENITH AFPSSLIQAN VTGTCGFC SQKEFLAIL RGWECYCAYP TPRFNLRDAM DSSVCGQDPE AQRLAEYCEV YQTPVQDTRC TDRRFLPNKS KVFVALSSFP GAGNTWARHL IEHATGFYTG SYYFDGTLYN KGFKGEKDHWR SRRTICVKT HESGRREIEM FDSAILLIRN PYRSLVAEFN RKCAGHLGYA ADRNWKSEW PDFVNSYASW WSSHVLDWLK YGKRLLVVHY EELRRSLVPT LREMVAFLNV SVSEERLLCV ENNKEGSFRR RGRRSHDPEP FTPEMKDLIN GYIRTVDQAL RDHNWTGLPR EYVPR</p>
Characteristics:	Human WSCD1 full-length ORF (AAH09975.1, 1 a.a. - 575 a.a.) recombinant protein with GST-

Product Details

tag at N-terminal.

Purification: in vitro wheat germ expression system

Target Details

Target: WSCD1

Alternative Name: WSCD1 ([WSCD1 Products](#))

Background: Full Gene Name: WSC domain containing 1
Synonyms: KIAA0523

Gene ID: 23302

Application Details

Application Notes: Optimal working dilution should be determined by the investigator.

Comment: Preparation method: in vitro, wheat germ expression system
Product Quality tested by: 12.5% SDS-PAGE Stained with Coomassie Blue.

Restrictions: For Research Use only

Handling

Buffer: 50 mM Tris-HCl, 10 mM reduced Glutathione, pH =8.0 in the elution buffer.

Handling Advice: Aliquot to avoid repeated freezing and thawing.

Storage: -80 °C

Storage Comment: Best use within three months from the date of receipt of this protein.

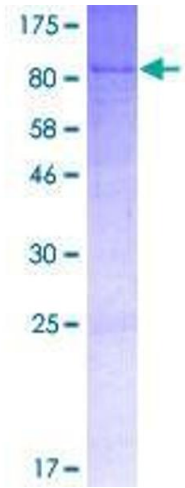


Image 1.