



Datasheet for ABIN1325407

WWP2 Protein (AA 1-335) (GST tag)



[Go to Product page](#)

1 Image

Overview

Quantity:	10 µg
Target:	WWP2
Protein Characteristics:	AA 1-335
Origin:	Human
Source:	Wheat germ
Protein Type:	Recombinant
Purification tag / Conjugate:	This WWP2 protein is labelled with GST tag.
Application:	Western Blotting (WB), ELISA, Antibody Array (AA), Affinity Purification (AP)

Product Details

Purpose:	WWP2 (Human) Recombinant Protein (P01)
Sequence:	MASASSSRAG VALPFEKSQL TLKVVSAPK VHNQRPRINS YVEVAVDGLP SETKKTGKRI GSSELLWNEI IILNVTAQSH LDLKVWSCHT LRNELLGTAS VNLSNVLKNN GGKMENMQLT LNLQTENKGS VVSGGELTIF LDGPTVDLGN VPNGSALTDG SQLPSRDSSG TAVAPENRHQ PPSTNCFGGR SRTHRHSGL ARTTPATGEQ SPGARSRHRQ PVKNSGHSGL ANGTVNDEPT TATDPEPSV VGVTSPPAAP LSVTPNPNTT SLPAPATPAE GEEPSTSGTQ QLPAAAQAPD ALPAGWEQRE LPNGRVYYVD HNTKTTTWER PLPPG
Characteristics:	Human WWP2 full-length ORF (NP_955455.1, 1 a.a. - 335 a.a.) recombinant protein with GST-tag at N-terminal.
Purification:	in vitro wheat germ expression system

Target Details

Target:	WWP2
Alternative Name:	WWP2 (WWP2 Products)
Background:	Full Gene Name: WW domain containing E3 ubiquitin protein ligase 2 Synonyms: AIP2,WWp2-like
Gene ID:	11060
NCBI Accession:	NM_199423
Pathways:	Negative Regulation of Transporter Activity

Application Details

Application Notes:	Optimal working dilution should be determined by the investigator.
Comment:	Preparation method: in vitro, wheat germ expression system Product Quality tested by: 12.5% SDS-PAGE Stained with Coomassie Blue.
Restrictions:	For Research Use only

Handling

Buffer:	50 mM Tris-HCl, 10 mM reduced Glutathione, pH =8.0 in the elution buffer.
Handling Advice:	Aliquot to avoid repeated freezing and thawing.
Storage:	-80 °C
Storage Comment:	Best use within three months from the date of receipt of this protein.

Images

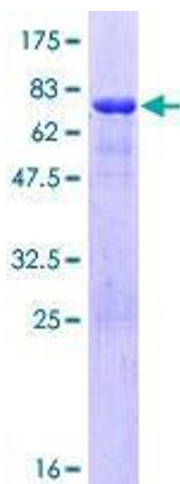


Image 1.