



[Go to Product page](#)

Datasheet for ABIN1325428
XBP1 Protein (AA 1-261) (GST tag)

1 Image

Overview

Quantity:	25 µg
Target:	XBP1
Protein Characteristics:	AA 1-261
Origin:	Human
Source:	Wheat germ
Protein Type:	Recombinant
Purification tag / Conjugate:	This XBP1 protein is labelled with GST tag.
Application:	Western Blotting (WB), ELISA, Antibody Array (AA), Affinity Purification (AP)

Product Details

Purpose:	XBP1 (Human) Recombinant Protein (P01)
Sequence:	MVVVAAAPNP ADGTPKVLLL SGQPASAAGA PAGQALPLMV PAQRGASPEA ASGGLPQARK RQRLTHLSPE EKALRRKLN RVAAQTARDR KKARMSELEQ QVVDLEENQ KLLLENQLLR EKTHGLLVEN QELRQRLGMD ALVAEEEEAEA KGNEVRPVAG SAESAALRLR APLQQVQAQL SPLQNIWPWI LAVLTLQIQS LISCWAFWTT WTQSCSSNAL PQSLPAWRSS QRSTQKDPVP YQPPFLCQWG RHQPSWKPLM N
Characteristics:	Human XBP1 full-length ORF (NP_005071.2, 1 a.a. - 261 a.a.) recombinant protein with GST-tag at N-terminal.
Purification:	in vitro wheat germ expression system

Target Details

Target:	XBP1
Alternative Name:	XBP1 (XBP1 Products)
Background:	Full Gene Name: X-box binding protein 1 Synonyms: TREB5,XBP2
Gene ID:	7494
NCBI Accession:	NM_005080
Pathways:	ER-Nucleus Signaling , Unfolded Protein Response

Application Details

Application Notes:	Optimal working dilution should be determined by the investigator.
Comment:	Preparation method: in vitro, wheat germ expression system Product Quality tested by: 12.5% SDS-PAGE Stained with Coomassie Blue.
Restrictions:	For Research Use only

Handling

Buffer:	50 mM Tris-HCl, 10 mM reduced Glutathione, pH =8.0 in the elution buffer.
Handling Advice:	Aliquot to avoid repeated freezing and thawing.
Storage:	-80 °C
Storage Comment:	Best use within three months from the date of receipt of this protein.

Images

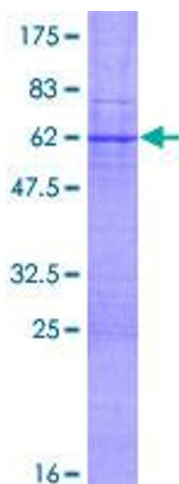


Image 1.