

Datasheet for ABIN1325442

XPNPEP1 Protein (AA 1-623) (GST tag)

1 Image

1 Publication



[Go to Product page](#)

Overview

Quantity:	10 µg
Target:	XPNPEP1
Protein Characteristics:	AA 1-623
Origin:	Human
Source:	Wheat germ
Protein Type:	Recombinant
Purification tag / Conjugate:	This XPNPEP1 protein is labelled with GST tag.
Application:	ELISA, Western Blotting (WB), Antibody Array (AA), Affinity Purification (AP)

Product Details

Purpose:	XPNPEP1 (Human) Recombinant Protein (P01)
Sequence:	MPPKVTSELL RQLRQAMRNS EYVTEPIQAY IIPSGDAHQS EYIAPCDCRR AFVSGFDGSA GTAIITEEHA AMWTDGRYFL QAAKQMDSNW TLMKMGLKDT PTQEDWLVSV LPEGSRVGVV PLIIPTDYWK KMAKVLRSAG HHLIPVKENL VDKIWTDRPE RPCKPLLTG LDYTGISWKD KVADLRLKMA ERNVMWFVVT ALDEIAWLFN LRGSDVEHNP VFFSYAIIGL ETIMLFIDGD RIDAPSVKEH LLLDLGLEAE YRIQVHPYKS ILSELKALCA DLSPREKVVW SDKASYAVSE TIPKDHRCOM PYTPICIAKA VKNSAESEGM RRAHIKDAVA LCELFNWLEK EVPKGGVTEI SAADKAEFR RQQADFVDSL FPTISSTGPN GAIHYAPVP ETNRTLSDLE VYLIDSGAQY KDGTTDVTRT MHFGTPTAYE KECFTYVLKG HIAVSAAVFP TGTKGHLLDS FARSALWDVG LDYLHGTGHG VGSFLNVHEG PCGISYKTFS DEPLEAGMIV TDEPGYEDG AFGIRIENVV LVVPVKTKYN FNNRGSSTFE PLTLVPIQTK MIDVDSLTDK ECDWLNNYHL TCRDVIGKEL QKQGRQEAL WLIRETQPIS KQH

Product Details

Characteristics:	Human XPNPEP1 full-length ORF (NP_065116.2, 1 a.a. - 623 a.a.) recombinant protein with GST-tag at N-terminal.
Purification:	in vitro wheat germ expression system

Target Details

Target:	XPNPEP1
Alternative Name:	XPNPEP1 (XPNPEP1 Products)
Background:	Full Gene Name: X-prolyl aminopeptidase (aminopeptidase P) 1, soluble Synonyms: SAMP,XPNPEP,XPNPEPL,XPNPEPL1
Gene ID:	7511
NCBI Accession:	NM_020383

Application Details

Application Notes:	Optimal working dilution should be determined by the investigator.
Comment:	Preparation method: in vitro, wheat germ expression system Product Quality tested by: 12.5% SDS-PAGE Stained with Coomassie Blue.
Restrictions:	For Research Use only

Handling

Buffer:	50 mM Tris-HCl, 10 mM reduced Glutathione, pH =8.0 in the elution buffer.
Handling Advice:	Aliquot to avoid repeated freezing and thawing.
Storage:	-80 °C
Storage Comment:	Best use within three months from the date of receipt of this protein.

Publications

Product cited in:	Cordova, Woodrick, Grindrod, Zhang, Saygideger-Kont, Wang, DeVito, Daniele, Paige, Brown: "Aminopeptidase P Mediated Targeting for Breast Tissue Specific Conjugate Delivery." in: Bioconjugate chemistry , Vol. 27, Issue 9, pp. 1981-90, (2016) (PubMed).
-------------------	--

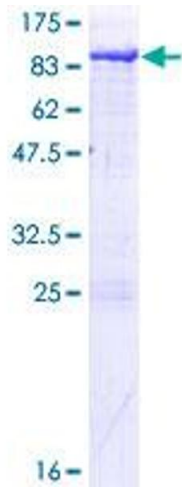


Image 1.