

Datasheet for ABIN1325444

**XPNPEP3 Protein (AA 1-507) (GST tag)**[Go to Product page](#)**1** Image

## Overview

Quantity:	10 µg
Target:	XPNPEP3
Protein Characteristics:	AA 1-507
Origin:	Human
Source:	Wheat germ
Protein Type:	Recombinant
Purification tag / Conjugate:	This XPNPEP3 protein is labelled with GST tag.
Application:	Western Blotting (WB), ELISA, Antibody Array (AA), Affinity Purification (AP)

## Product Details

Purpose:	XPNPEP3 (Human) Recombinant Protein (P01)
Sequence:	MPWLLSAPKL VPAVANVRGL SGCMLCSQRR YSLQPVPERR IPNRYLGQPS PFTHPHLLRP GEVTPGLSQV EYALRRHKLM SLIQKEAQQG SGTDQTVVVL SNPTYMSND IPYTFHQDNN FLYLCGFQEP DSILVLQSLP GKQLPSHKAI LFPVRRDPSR ELWDGPRSGT DGAIALTGVD EAYTLEEFQH LLPKMKAETN MVWYDWMRPS HAQLHSDYMQ PLTEAKAKSK NKVRGVQQLI QRLRLIKSPA EIERMQIAGK LTSQAFIETM FTSKAPVEEA FLYAKFEFEC RARGADILAY PPVVAGGNRS NTLHYVKNNQ LIKDGEMVLL DGGCESSCYV SDITRTWPVN GRFTAPQAEI YEAVLEIQRD CLALCFPGTS LENIYSMMLT LIGQKLKDLG IMKNIKENNA FKAARKYCPH HVGHYLGMDV HDTPDMRSL PLQPGMVITI EPGIYIPEDD KDAPEKFRGL GVRIEDDVVV TQDSPLILSA DCPKEMNDIE QICSQAS
Characteristics:	Human XPNPEP3 full-length ORF ( NP_071381.1, 1 a.a. - 507 a.a.) recombinant protein with GST-tag at N-terminal.

## Product Details

---

Purification: in vitro wheat germ expression system

## Target Details

---

Target: XPNPEP3

Alternative Name: XPNPEP3 ([XPNPEP3 Products](#))

Background: Full Gene Name: X-prolyl aminopeptidase (aminopeptidase P) 3, putative  
Synonyms: APP3

Gene ID: 63929

NCBI Accession: [NM\\_022098](#)

## Application Details

---

Application Notes: Optimal working dilution should be determined by the investigator.

Comment: Preparation method: in vitro, wheat germ expression system  
Product Quality tested by: 12.5% SDS-PAGE Stained with Coomassie Blue.

Restrictions: For Research Use only

## Handling

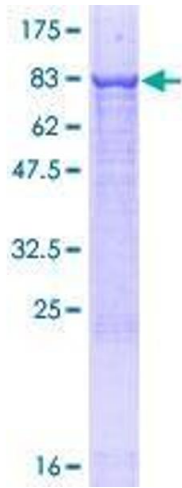
---

Buffer: 50 mM Tris-HCl, 10 mM reduced Glutathione, pH =8.0 in the elution buffer.

Handling Advice: Aliquot to avoid repeated freezing and thawing.

Storage: -80 °C

Storage Comment: Best use within three months from the date of receipt of this protein.



**Image 1.**