

Datasheet for ABIN1325452
XPOT Protein (AA 1-962) (GST tag)



[Go to Product page](#)

1 Image

Overview

Quantity:	10 µg
Target:	XPOT
Protein Characteristics:	AA 1-962
Origin:	Human
Source:	Wheat germ
Protein Type:	Recombinant
Purification tag / Conjugate:	This XPOT protein is labelled with GST tag.
Application:	ELISA, Western Blotting (WB), Antibody Array (AA), Affinity Purification (AP)

Product Details

Purpose:	XPOT (Human) Recombinant Protein (P01)
Sequence:	MDEQALLGLN PNADSDFRQR ALAYFEQLKI SPDAWQVCAE ALAQRYSDD HVKFFCFQVL EHQVKYKYSE LTTVQQQLIR ETLISWLQAQ MLNPQPEKTF IRNCAAQVFA LLFVTEYLTK WPKFFFDILS VVDLNRGVD LYLRILMAID SELVDRDVVH TSEEARRNTL IKDTMREQCI PNLVESWYQI LQNYQFTNSE VTCQCLEVVG AYVSWIDL SL IANDRFINML LGHMSIEVLR EEACDCLFEV VNKGM DPVDK MKLVESLCQV LQSAGFFSID QEEDVD FLAR FSKLVNGMGQ SLIVSWSKLI KNGDIKNAQE ALQAIETKVA LMLQLLIHED DDISSNIIGF CYDYLHILKQ LTVLSDQKKA NVEAIMLAVM KKLTYDEEYN FENEGEDEAM FVEYRQKLKL LLDRLAQVSP ELLLASVRRV FSSTLQNWQT TRFMEVEVAI RLLYMLAEAL PVSHGAHFSG DVSKASALQD MMRTLVTSGV SSYQHTSVTL EFFETVVRYE KFFTVEPQHI PCVLMAFLDH RGLRHSSAKV RSRTAYLFSR FVKSLNKQMN PFIEDILNRI QDLLELSPPE NGHQSLSSD DQLFIYETAG VLIVNSEYPA ERKQALMRNL LTPLMEKFKI LLEKLMLAQD EERQASLADC LNHAVGFASR

Product Details

TSKAFSNKQT VKQCGCSEVY LDCLQTFLLPA LSCPLQKDIL RSGVRTFLHR MIICLEEEVL
PFIPSASEHM LKDCEAKDLQ EFIPLINQIT AKFKIQVSPF LQQMFMPLLH AIFEVLLRPA
EENDQSAALE KQMLRRSYFA FLQTVTGSGM SEVIANQGAE NVERVLVTVI QGAVEYPDPI
AQKTCFIILS KLVELWGGKD GPVGFADFVY KHIVPACFLA PLKQTFDLAD AQTVLALSEC
AVTLKTIHLK RGPECVQYLQ QEYLPQLQA PEIIQEFCQA LQQPDAKVFK NYLKVFFQRA KP

Characteristics: Human XPOT full-length ORF (NP_009166.2, 1 a.a. - 962 a.a.) recombinant protein with GST-tag at N-terminal.

Purification: in vitro wheat germ expression system

Target Details

Target: XPOT

Alternative Name: XPOT ([XPOT Products](#))

Background: Full Gene Name: exportin, tRNA (nuclear export receptor for tRNAs)
Synonyms: XPO3

Gene ID: 11260

NCBI Accession: [NM_007235](#)

Application Details

Application Notes: Optimal working dilution should be determined by the investigator.

Comment: Preparation method: in vitro, wheat germ expression system
Product Quality tested by: 12.5% SDS-PAGE Stained with Coomassie Blue.

Restrictions: For Research Use only

Handling

Buffer: 50 mM Tris-HCl, 10 mM reduced Glutathione, pH =8.0 in the elution buffer.

Handling Advice: Aliquot to avoid repeated freezing and thawing.

Storage: -80 °C

Storage Comment: Best use within three months from the date of receipt of this protein.

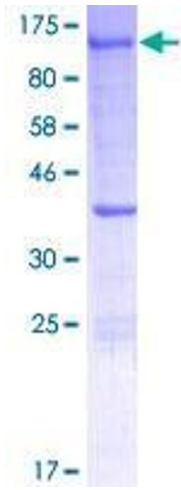


Image 1.