



[Go to Product page](#)

Datasheet for ABIN1325518

## YIPF3 Protein (AA 1-350) (GST tag)

### 1 Image

#### Overview

Quantity:	10 µg
Target:	YIPF3
Protein Characteristics:	AA 1-350
Origin:	Human
Source:	Wheat germ
Protein Type:	Recombinant
Purification tag / Conjugate:	This YIPF3 protein is labelled with GST tag.
Application:	ELISA, Western Blotting (WB), Antibody Array (AA), Affinity Purification (AP)

#### Product Details

Sequence: MATTAAPAGG ARNGAGPEWG GFEENIQGGG SAVIDMENMD DTSGSSFEDM GELHQRLREE  
EVDADAADAA AAEEDEDGEFL GMKGFKGQLS RQVADQMWQA GKRQASRAFS LYANIDILRP  
YFDVEPAQVR SRLLESMIPI KMVNFPQKIA GELYGPLMLV FTLVAILLHG MKTSDTIIRE  
GTLMGTAIGT CFGYWLGVSS FIYFLAYLCN AQITMLQMLA LLGYGLFGHC IVLFITYNIH  
LHALFYLFWL LVGGLSTLRM VAVLVSRTVG PTQRLLLCGT LAALHMLFLL YLHFAYHKVW  
EGILDTLGEP NIPPIQRVPR DIPAMLPAAR LPTTVLNATA KAVAVTLQSH

#### Target Details

Target:	YIPF3
Alternative Name:	YIPF3 ( <a href="#">YIPF3 Products</a> )
Background:	Full Gene Name: Yip1 domain family, member 3

## Target Details

Synonyms: C6orf109,DKFZp566C243,FinGER3,KLIP1,dJ337H4.3

Gene ID: 25844

NCBI Accession: [NP\\_056203](#), [NM\\_015388](#)

## Application Details

Application Notes: Optimal working dilution should be determined by the investigator.

Comment: Preparation method: in vitro, wheat germ expression system  
Product Quality tested by: 12.5% SDS-PAGE Stained with Coomassie Blue.

Restrictions: For Research Use only

## Handling

Buffer: 50 mM Tris-HCl, 10 mM reduced Glutathione, pH =8.0 in the elution buffer.

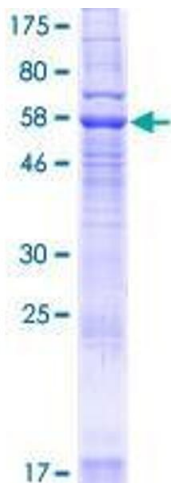
Handling Advice: Aliquot to avoid repeated freezing and thawing.

Storage: -80 °C

Storage Comment: Store at -80 °C. Aliquot to avoid repeated freezing and thawing.

Expiry Date: 3 months

## Images



**Image 1.**