

Datasheet for ABIN1325525  
**YME1L1 Protein (AA 1-740) (GST tag)**



[Go to Product page](#)

1 Image

## Overview

Quantity:	10 µg
Target:	YME1L1
Protein Characteristics:	AA 1-740
Origin:	Human
Source:	Wheat germ
Protein Type:	Recombinant
Purification tag / Conjugate:	This YME1L1 protein is labelled with GST tag.
Application:	ELISA, Western Blotting (WB), Antibody Array (AA), Affinity Purification (AP)

## Product Details

Purpose:	YME1L1 (Human) Recombinant Protein (P01)
Sequence:	MFSLSSSTVQP QVTVPLSHLI NAFHTPKNTS VLSGSVSVSQ NQHRDVVPEH EAPSSECMFS DFLTCLNIVS IGKGFIFEGY RSMFMENPAKR MKKSLDITDN WHIRPEPFSL SIPPSTLNRD LGLSELKIGQ IDQLVENLLP GFCKGKNISS HWHTSHVSAQ SFFENKYGNL DIFSTLRSSC LYRHHSRALQ SICSDLQYWP VFIQSRGFKT LKSRTTRRLQS TSELAETQN IAPSFVKGFL LRDRGSDVES LDKLMKTKNI PEAHQDAFKT GFAEGFLKAQ ALTQKTNSDL RRTRLILFVL LLFGIYGLLK NPFLSVRFRT TTGLDSA VDP VQMKNVTFEH VKGVVEAKQE LQEVVEFLKN PQKFTILGGK LPKGILLVGP PGTGKTLAR AVAGEADV PF YYASGSEFDE MFVGVGASRI RNLFREAKAN APCVIFIDEL DSVGGKRIES PMHPYSRQTI NQLLAEMDGF KPNEGVIIIG ATNFPEALDN ALIRPGRFDM QVTVPRPDVK GRTEILKWYL NKIKFDQSVD PEIARGTVG FSGAELENLV NQAALKA AVD GKEMVTMKEL EFSKDKILMG PERRSVEIDN KNKTITAYHE SGHAIAYYT KDAMPINKAT IMPRGPTLGH VSLLPENDRW NETRAQLLAQ MDVSMGGRVA

## Product Details

---

EELIFGTDHI TTGASSDFDN ATKIAKRMVT KFGMSEKLGV MTYSDTGKLS PETQSAIEQE  
IRILLRDSYE RAKHILKTHS

Characteristics: Human YME1L1 full-length ORF ( NP\_647474.1, 1 a.a. - 740 a.a.) recombinant protein with GST-tag at N-terminal.

Purification: in vitro wheat germ expression system

## Target Details

---

Target: YME1L1

Alternative Name: YME1L1 ([YME1L1 Products](#))

Background: Full Gene Name: YME1-like 1 (*S. cerevisiae*)  
Synonyms: FTSH,MEG4,PAMP,YME1L

Gene ID: 10730

NCBI Accession: [NM\\_139313](#)

## Application Details

---

Application Notes: Optimal working dilution should be determined by the investigator.

Comment: Preparation method: in vitro, wheat germ expression system  
Product Quality tested by: 12.5% SDS-PAGE Stained with Coomassie Blue.

Restrictions: For Research Use only

## Handling

---

Buffer: 50 mM Tris-HCl, 10 mM reduced Glutathione, pH =8.0 in the elution buffer.

Handling Advice: Aliquot to avoid repeated freezing and thawing.

Storage: -80 °C

Storage Comment: Best use within three months from the date of receipt of this protein.

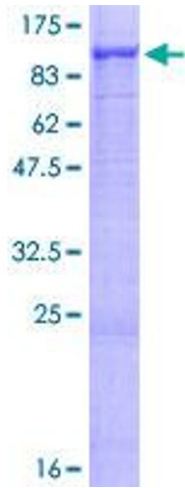


Image 1.