

Datasheet for ABIN1325533  
**YRDC Protein (AA 1-270) (GST tag)**



[Go to Product page](#)

1 Image

## Overview

Quantity:	10 µg
Target:	YRDC
Protein Characteristics:	AA 1-270
Origin:	Human
Source:	Wheat germ
Protein Type:	Recombinant
Purification tag / Conjugate:	This YRDC protein is labelled with GST tag.
Application:	ELISA, Western Blotting (WB), Antibody Array (AA), Affinity Purification (AP)

## Product Details

Purpose:	YRDC (Human) Recombinant Protein (P01)
Sequence:	MRAAVAASVG LSEGPAGSRS GRLFRPPSPA PAAPGARLLR LPGSGAVQAA SPERAGWTEA LRAAVAE LRA GAVVAVPTDT LYGLACAASC SAALRAVYRL KGRSEAKPLA VCLGRVADVY RYCRVRVPEG LLKDLLPGPV TLVMERSEEL NKDLNPFTPL VGIRIPDHAF MQDLAQMFE G PLALTSANLS SQASSLNVEE FQDLWPQLSL VIDGGQIGDG QSPECRLGST VVDSLVP GKF GIIRPGCALE STTAILQQKY GLLPSHASYL
Characteristics:	Human YRDC full-length ORF ( AAH67857.2, 1 a.a. - 270 a.a.) recombinant protein with GST-tag at N-terminal.
Purification:	in vitro wheat germ expression system

## Target Details

Target:	YRDC
Alternative Name:	YRDC (YRDC Products)
Background:	Full Gene Name: yrdC domain containing (E. coli) Synonyms: DRIP3,FLJ23476,FLJ26165,IRIP,RP11-109P14.4,SUA5
Gene ID:	79693

## Application Details

Application Notes:	Optimal working dilution should be determined by the investigator.
Comment:	Preparation method: in vitro, wheat germ expression system Product Quality tested by: 12.5% SDS-PAGE Stained with Coomassie Blue.
Restrictions:	For Research Use only

## Handling

Buffer:	50 mM Tris-HCl, 10 mM reduced Glutathione, pH =8.0 in the elution buffer.
Handling Advice:	Aliquot to avoid repeated freezing and thawing.
Storage:	-80 °C
Storage Comment:	Best use within three months from the date of receipt of this protein.

## Images

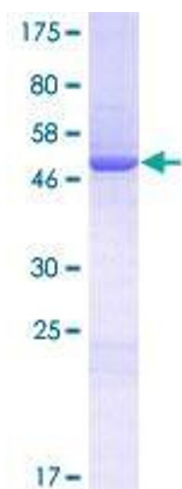


Image 1.