

Datasheet for ABIN1325574  
**ZBED1 Protein (AA 1-694) (GST tag)**



[Go to Product page](#)

1 Image

Overview

Quantity:	10 µg
Target:	ZBED1
Protein Characteristics:	AA 1-694
Origin:	Human
Source:	Wheat germ
Protein Type:	Recombinant
Purification tag / Conjugate:	This ZBED1 protein is labelled with GST tag.
Application:	ELISA, Western Blotting (WB), Antibody Array (AA), Affinity Purification (AP)

Product Details

Purpose:	ZBED1 (Human) Recombinant Protein (P01)
Sequence:	MENKSLESSQ TDLKLVHPR AKSKVWKYFG FDTNAEGCIL QWKKIYCRIC MAQIAYSGNT SNLSYHLEKN HPEEFCEFKV SNTEQMREAF ATAFSKLKPE SSQQPGQDAL AVKAGHGYDS KKQQELTAAV LGLICEGLYP ASIVDEPTFK VLLKTADPRY ELPSRKYIST KAYPEKYGAV REVILKELAE ATWCGISTDM WRSENQNRAY VTAAHFLGL GAPNCLSMGS RCLKTFEVPE ENTAETITRV LYEVFIEWGI SAKVFGATTN YGKDIVKACS LLDVAVHMPC LGHTFNAGIQ QAFQLPKLGA LLSRCRKLVE YFQSAVAMY MLYEKQKQQN VAHCMLVSNR VSWWGSTLAM LQRLKEQQFV IAGVLVEDSN NHHLMLEASE WATIEGLVEL LQPFKQVAEM LSASRYPTIS MVKPLLHMLL NTTLNIKETD SKELSMKEV IAKELSKTYQ ETPEIDMFLN VATFLDPRYK RLPFLSAFER QQVENRVVEE AKGLLDKVKD GGYRPAEDKI FVPEEPPVK KLMRTSTPPP ASVINNMLAE IFCQTGGVED QEEWHAQVVE ELSNFKSQKV LGLNEDPLKW WSDRLALFPL LPKVLQKYWC VTATRVAPER LFGSAANVVS AKRNRLAPAH VDEQVFLYEN ARSGAEAEPE

## Product Details

---

DQDEGEWGLD QEQVFLGDG VSGGFFGIRD SSFL

Characteristics:	Human ZBED1 full-length ORF ( NP_004720.1, 1 a.a. - 694 a.a.) recombinant protein with GST-tag at N-terminal.
Purification:	in vitro wheat germ expression system

## Target Details

---

Target:	ZBED1
Alternative Name:	ZBED1 ( <a href="#">ZBED1 Products</a> )
Background:	Full Gene Name: zinc finger, BED-type containing 1 Synonyms: ALTE,DREF,KIAA0785,TRAMP,hDREF
Gene ID:	9189
NCBI Accession:	<a href="#">NM_004729</a>

## Application Details

---

Application Notes:	Optimal working dilution should be determined by the investigator.
Comment:	Preparation method: in vitro, wheat germ expression system Product Quality tested by: 12.5% SDS-PAGE Stained with Coomassie Blue.
Restrictions:	For Research Use only

## Handling

---

Buffer:	50 mM Tris-HCl, 10 mM reduced Glutathione, pH =8.0 in the elution buffer.
Handling Advice:	Aliquot to avoid repeated freezing and thawing.
Storage:	-80 °C
Storage Comment:	Best use within three months from the date of receipt of this protein.

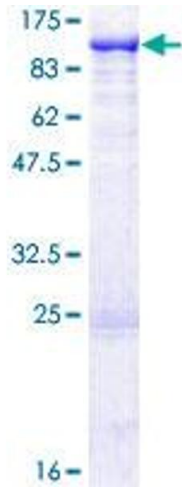


Image 1.