



[Go to Product page](#)

Datasheet for ABIN1325579

ZBED3 Protein (AA 1-234) (GST tag)

1 Image

Overview

Quantity:	10 µg
Target:	ZBED3
Protein Characteristics:	AA 1-234
Origin:	Human
Source:	Wheat germ
Protein Type:	Recombinant
Purification tag / Conjugate:	This ZBED3 protein is labelled with GST tag.
Application:	Western Blotting (WB), ELISA, Antibody Array (AA), Affinity Purification (AP)

Product Details

Purpose:	ZBED3 (Human) Recombinant Protein (P01)
Sequence:	MRSGEFACTM DQARGLDDAA ARGGQCPLG PAPTPTPPGR LGAPYSEAWG YFHLAPGRPG HPSGHWATCR LCGEQVGRGP GFHAGTSALW RHLRSAHRRE LESSGAGSSP PAAPCPPPPG PAAAPEGDWA RLLEQMGALA VRGSRREREL ERRELAVEQG ERALERRRRA LQEEERAAAQ ARRELQAERE ALQARLRDVS RREGALGWAP AAPPLKDDP EGDRDGCVIT KVLL
Characteristics:	Human ZBED3 full-length ORF (NP_115743.1, 1 a.a. - 234 a.a.) recombinant protein with GST-tag at N-terminal.
Purification:	in vitro wheat germ expression system

Target Details

Target:	ZBED3
---------	-------

Target Details

Alternative Name:	ZBED3 (ZBED3 Products)
Target Type:	Viral Protein
Background:	Full Gene Name: zinc finger, BED-type containing 3 Synonyms: MGC15435
Gene ID:	84327
NCBI Accession:	NM_032367

Application Details

Application Notes:	Optimal working dilution should be determined by the investigator.
Comment:	Preparation method: in vitro, wheat germ expression system Product Quality tested by: 12.5% SDS-PAGE Stained with Coomassie Blue.
Restrictions:	For Research Use only

Handling

Buffer:	50 mM Tris-HCl, 10 mM reduced Glutathione, pH =8.0 in the elution buffer.
Handling Advice:	Aliquot to avoid repeated freezing and thawing.
Storage:	-80 °C
Storage Comment:	Best use within three months from the date of receipt of this protein.

Images

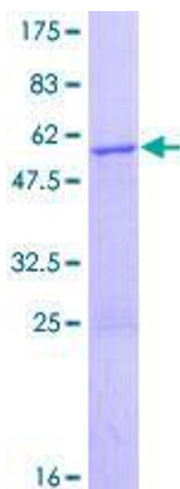


Image 1.