

Datasheet for ABIN1325587
ZBTB12 Protein (AA 1-459) (GST tag)



[Go to Product page](#)

1 Image

Overview

Quantity:	25 µg
Target:	ZBTB12
Protein Characteristics:	AA 1-459
Origin:	Human
Source:	Wheat germ
Protein Type:	Recombinant
Purification tag / Conjugate:	This ZBTB12 protein is labelled with GST tag.
Application:	ELISA, Western Blotting (WB), Antibody Array (AA), Affinity Purification (AP)

Product Details

Purpose:	ZBTB12 (Human) Recombinant Protein (P01)
Sequence:	MASGVEVLR FQLPGHEAATL RNMNQLRAEE RFCDVTIVAD SLKFRGHKVI LAACSPFLRD QFLNPSSEL QVSLMHSARI VADLLLSCYT GALEFAVRDI VNYLTAASYL QMEHVVEKCR NALSQFIEPK IGLKEDGVSE ASLVSSISAT KLLPPARTP KPAPKPPPPP PLPPPLLRPV KLEFPLDEDL ELKAEEDDED EDEDVSDICI VKVESALEVA HRLKPPGGLG GGLGIGGSVG GHLGELAQSS VPPSTVAPPQ GVVKACYSLS EDAEGEGLLL IPGGRASVGA TSGLVEAAAV AMAARGAGGS LGAGGSRGPL PGGFSGGNPL KNICKTKCPE VFQGVKLVF HMRAQHIFIM CPRCGKQFNH SSNLNRHMNV HRGVKSHSCG ICGKCFTQKS TLHDHLNLHS GARPYRCSYC DVRFAHKPAI RRHLKEQHKG TTAENVLEAS VAEINVLIR
Characteristics:	Human ZBTB12 full-length ORF (NP_862825.1, 1 a.a. - 459 a.a.) recombinant protein with GST-tag at N-terminal.

Product Details

Purification: in vitro wheat germ expression system

Target Details

Target: ZBTB12

Alternative Name: ZBTB12 ([ZBTB12 Products](#))

Background: Full Gene Name: zinc finger and BTB domain containing 12
Synonyms: Bat9,C6orf46,D6S59E,G10,NG35

Gene ID: 221527

NCBI Accession: [NM_181842](#)

Application Details

Application Notes: Optimal working dilution should be determined by the investigator.

Comment: Preparation method: in vitro, wheat germ expression system
Product Quality tested by: 12.5% SDS-PAGE Stained with Coomassie Blue.

Restrictions: For Research Use only

Handling

Buffer: 50 mM Tris-HCl, 10 mM reduced Glutathione, pH =8.0 in the elution buffer.

Handling Advice: Aliquot to avoid repeated freezing and thawing.

Storage: -80 °C

Storage Comment: Best use within three months from the date of receipt of this protein.

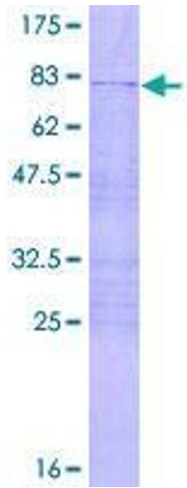


Image 1.