



[Go to Product page](#)

Datasheet for ABIN1325619

ZBTB6 Protein (AA 1-424) (GST tag)

1 Image

Overview

Quantity:	10 µg
Target:	ZBTB6
Protein Characteristics:	AA 1-424
Origin:	Human
Source:	Wheat germ
Protein Type:	Recombinant
Purification tag / Conjugate:	This ZBTB6 protein is labelled with GST tag.
Application:	ELISA, Western Blotting (WB), Antibody Array (AA), Affinity Purification (AP)

Product Details

Purpose:	ZNF482 (Human) Recombinant Protein (P01)
Sequence:	MAAESDVLHF QFEQQGDVVL QKMNLLRQQN LFCDVSIYIN DTEFQGHKVI LAACSTFMRD QFLLTQSKHV RITILQSAEV GRKLLLSCTY GALEVKRKEL LKYLTAASYL QMVHIVEKCT EALSKYLEID LSMKNNNQHT DLCQSSDPDV KNEDENSDKD CEIIEISEDS PVNIDFHVKE EESNALQSTV ESLTSERKEM KSPPELSTVDI GFKDNEICIL HVESISTAGV ENGQFSQPCT SSKASMYFSE TQHSLINSTV ESRVAEVPGN QDQGLFCENT EGSYGTVSEI QNLEEGYSLR HQCPRCPRGF LHVENYLRHL KMHKLFLCLQ CGKTFTQKKN LNRHIRGHMG IRPFQCTVCL KTFTAKSTLQ DHLNIHSGDR PYKCHCCDMD FKHKSAKSKH LTSVHGRSSG EKLSRPDLKR QSL
Characteristics:	Human ZNF482 full-length ORF (NP_006617.1, 1 a.a. - 424 a.a.) recombinant protein with GST-tag at N-terminal.
Purification:	in vitro wheat germ expression system

Target Details

Target:	ZBTB6
Alternative Name:	ZBTB6 (ZBTB6 Products)
Background:	Full Gene Name: zinc finger and BTB domain containing 6 Synonyms: ZID,ZNF482
Gene ID:	10773
NCBI Accession:	NM_006626

Application Details

Application Notes:	Optimal working dilution should be determined by the investigator.
Comment:	Preparation method: in vitro, wheat germ expression system Product Quality tested by: 12.5% SDS-PAGE Stained with Coomassie Blue.
Restrictions:	For Research Use only

Handling

Buffer:	50 mM Tris-HCl, 10 mM reduced Glutathione, pH =8.0 in the elution buffer.
Handling Advice:	Aliquot to avoid repeated freezing and thawing.
Storage:	-80 °C
Storage Comment:	Best use within three months from the date of receipt of this protein.

Images

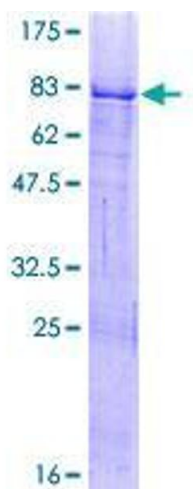


Image 1.