



[Go to Product page](#)

Datasheet for ABIN1325621

ZBTB6 Protein (AA 121-220) (GST tag)

1 Image

Overview

Quantity:	10 µg
Target:	ZBTB6
Protein Characteristics:	AA 121-220
Origin:	Human
Source:	Wheat germ
Protein Type:	Recombinant
Purification tag / Conjugate:	This ZBTB6 protein is labelled with GST tag.
Application:	ELISA, Western Blotting (WB), Antibody Array (AA), Affinity Purification (AP)

Product Details

Purpose:	ZNF482 (Human) Recombinant Protein (Q01)
Sequence:	EALSKYLEID LSMKNNNQHT DLCQSSDPDV KNEDENSDKD CEIIEISEDS PVNIDFHVKE EESNALQSTV ESLTSERKEM KSPPELSTVDI GFKDNEICIL
Characteristics:	Human ZNF482 partial ORF (NP_006617.1, 121 a.a. - 220 a.a.) recombinant protein with GST-tag at N-terminal.
Purification:	in vitro wheat germ expression system

Target Details

Target:	ZBTB6
Alternative Name:	ZBTB6 (ZBTB6 Products)

Target Details

Background:	Full Gene Name: zinc finger and BTB domain containing 6 Synonyms: ZID,ZNF482
Gene ID:	10773
NCBI Accession:	NM_006626

Application Details

Application Notes:	Optimal working dilution should be determined by the investigator.
Comment:	Preparation method: in vitro, wheat germ expression system Product Quality tested by: 12.5% SDS-PAGE Stained with Coomassie Blue.
Restrictions:	For Research Use only

Handling

Buffer:	50 mM Tris-HCl, 10 mM reduced Glutathione, pH =8.0 in the elution buffer.
Handling Advice:	Aliquot to avoid repeated freezing and thawing.
Storage:	-80 °C
Storage Comment:	Best use within three months from the date of receipt of this protein.

Images

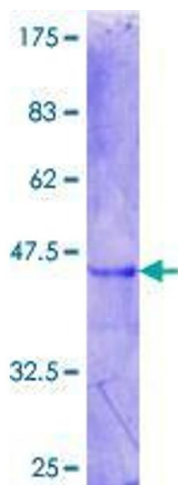


Image 1.