



[Go to Product page](#)

Datasheet for ABIN1325635

## ZC3H14 Protein (AA 1-306) (GST tag)

### 1 Image

#### Overview

Quantity:	10 µg
Target:	ZC3H14
Protein Characteristics:	AA 1-306
Origin:	Human
Source:	Wheat germ
Protein Type:	Recombinant
Purification tag / Conjugate:	This ZC3H14 protein is labelled with GST tag.
Application:	ELISA, Western Blotting (WB), Antibody Array (AA), Affinity Purification (AP)

#### Product Details

Purpose:	ZC3H14 (Human) Recombinant Protein (P01)
Sequence:	MRMSSKFSP PLPIFLPEP VDLGSITSSS CSLNELDNIS HLLRKISADI NEIKGMKAAI LTVEANLFDL NVRVSKNEAK ISSLEVKMNE YSTTYECNRQ FEDQEEDTES QSRTTDVKII GFLRNVEKGT QQRQLLSRLQ IDPVMAETLQ MSQAEMSELS VAQKPEKLE RCKYWPACKN GDECAYHHPI SPCKAFPNCCK FAEKCLFVHP NCKYDAKCTK PDCPFTHVSR RIPVLSPPKV APPAPPSSSQ LCRYFPACKK MECPFYHPKH CRFNTQCTRP DCTFYHPTIN VPPRHALKWI RPQTSE
Characteristics:	Human ZC3H14 full-length ORF ( NP_997545.2, 1 a.a. - 306 a.a.) recombinant protein with GST-tag at N-terminal.
Purification:	in vitro wheat germ expression system

## Target Details

Target:	ZC3H14
Alternative Name:	ZC3H14 ( <a href="#">ZC3H14 Products</a> )
Background:	Full Gene Name: zinc finger CCCH-type containing 14 Synonyms: FLJ11806,MGC26892,NY-REN-37,UKp68
Gene ID:	79882
NCBI Accession:	<a href="#">NM_207662</a>

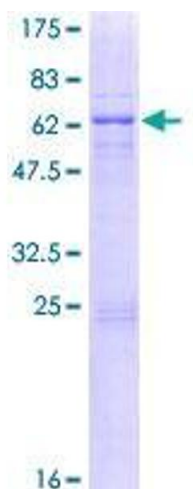
## Application Details

Application Notes:	Optimal working dilution should be determined by the investigator.
Comment:	Preparation method: in vitro, wheat germ expression system Product Quality tested by: 12.5% SDS-PAGE Stained with Coomassie Blue.
Restrictions:	For Research Use only

## Handling

Buffer:	50 mM Tris-HCl, 10 mM reduced Glutathione, pH =8.0 in the elution buffer.
Handling Advice:	Aliquot to avoid repeated freezing and thawing.
Storage:	-80 °C
Storage Comment:	Best use within three months from the date of receipt of this protein.

## Images



**Image 1.**