



[Go to Product page](#)

Datasheet for ABIN1325639

ZC3H7A Protein (AA 1-167) (GST tag)

1 Image

Overview

Quantity:	10 µg
Target:	ZC3H7A
Protein Characteristics:	AA 1-167
Origin:	Human
Source:	Wheat germ
Protein Type:	Recombinant
Purification tag / Conjugate:	This ZC3H7A protein is labelled with GST tag.
Application:	ELISA, Western Blotting (WB), Antibody Array (AA), Affinity Purification (AP)

Product Details

Purpose:	ZC3H7A (Human) Recombinant Protein (P01)
Sequence:	MKENGIQDME QFYELWLKSQ KNEKSEDIAS QSNKENGKQI HMPTDYAEVT VDFHCWMCCK NCNSEKQWQG HISSEKHKEK VFHTEDDQYC WQHRFPTGYF SICDRYMNGT CPEGNSCKFA HGNAELHEWE ERRDALKMKL NKARKDHLIG PNDNDFGKYS FLFKDLN
Characteristics:	Human ZC3H7A full-length ORF (AAH12575.1, 1 a.a. - 167 a.a.) recombinant protein with GST-tag at N-terminal.
Purification:	in vitro wheat germ expression system

Target Details

Target:	ZC3H7A
Alternative Name:	ZC3H7A (ZC3H7A Products)

Target Details

Background:	Full Gene Name: zinc finger CCCH-type containing 7A Synonyms: FLJ10027,FLJ20318,HSPC055,ZC3H7,ZC3HDC7
Gene ID:	29066
Pathways:	SARS-CoV-2 Protein Interactome

Application Details

Application Notes:	Optimal working dilution should be determined by the investigator.
Comment:	Preparation method: in vitro, wheat germ expression system Product Quality tested by: 12.5% SDS-PAGE Stained with Coomassie Blue.
Restrictions:	For Research Use only

Handling

Buffer:	50 mM Tris-HCl, 10 mM reduced Glutathione, pH =8.0 in the elution buffer.
Handling Advice:	Aliquot to avoid repeated freezing and thawing.
Storage:	-80 °C
Storage Comment:	Best use within three months from the date of receipt of this protein.

Images

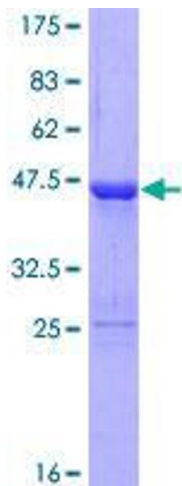


Image 1.