



[Go to Product page](#)

Datasheet for ABIN1325642  
**ZC3HAV1 Protein (AA 601-699) (GST tag)**

1 Image

Overview

Quantity:	10 µg
Target:	ZC3HAV1
Protein Characteristics:	AA 601-699
Origin:	Human
Source:	Wheat germ
Protein Type:	Recombinant
Purification tag / Conjugate:	This ZC3HAV1 protein is labelled with GST tag.
Application:	ELISA, Western Blotting (WB), Antibody Array (AA), Affinity Purification (AP)

Product Details

Purpose:	ZC3HAV1 (Human) Recombinant Protein (Q01)
Sequence:	SVFTTKWIWY WKNESGTWIQ YGEEKDKRKN SNVDSSYLES LYQSCPRGVV PFQAGSRNYE LSFQGMQTN IASKTQKDVI RRPTFVPQWY VQQMKRGPE
Characteristics:	Human ZC3HAV1 partial ORF ( NP_078901.3, 601 a.a. - 699 a.a.) recombinant protein with GST-tag at N-terminal.
Purification:	in vitro wheat germ expression system

Target Details

Target:	ZC3HAV1
Alternative Name:	ZC3HAV1 ( <a href="#">ZC3HAV1 Products</a> )

## Target Details

Background:	Full Gene Name: zinc finger CCCH-type, antiviral 1 Synonyms: DKFZp686F2052,DKFZp686H1869,DKFZp686O19171,FLB6421,FLJ13288,MGC48898,ZAP,ZC3H2,ZC3HDC2
Gene ID:	56829
NCBI Accession:	<a href="#">NM_024625</a>

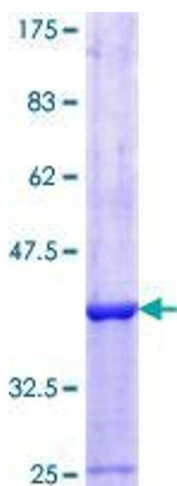
## Application Details

Application Notes:	Optimal working dilution should be determined by the investigator.
Comment:	Preparation method: in vitro, wheat germ expression system Product Quality tested by: 12.5% SDS-PAGE Stained with Coomassie Blue.
Restrictions:	For Research Use only

## Handling

Buffer:	50 mM Tris-HCl, 10 mM reduced Glutathione, pH =8.0 in the elution buffer.
Handling Advice:	Aliquot to avoid repeated freezing and thawing.
Storage:	-80 °C
Storage Comment:	Best use within three months from the date of receipt of this protein.

## Images



**Image 1.**