



[Go to Product page](#)

Datasheet for ABIN1325644

## ZC3HAV1L Protein (AA 1-300) (GST tag)

### 1 Image

#### Overview

Quantity:	10 µg
Target:	ZC3HAV1L
Protein Characteristics:	AA 1-300
Origin:	Human
Source:	Wheat germ
Protein Type:	Recombinant
Purification tag / Conjugate:	This ZC3HAV1L protein is labelled with GST tag.
Application:	ELISA, Western Blotting (WB), Antibody Array (AA), Affinity Purification (AP)

#### Product Details

Purpose:	ZC3HAV1L (Human) Recombinant Protein (P01)
Sequence:	MAEPTVCSFL TKVLCAHGGR MFLKDLRGHV ELSEARLRDV LQRAGPERFL LQEVETQEGL GDAEAEAAAAG AVGGGGTSAW RVVAVSSVRL CARYQRGECQ ACDQLHFCRR HMLGKCPNRD CWSTCTLSHD IHTPVNMQVL KSHGLFGLNE NQLRILLQNP DPCLLPEVCL LYNKGEALYG YCNLKDCKCNK FHVCKSFVKG ECKLQTCKRS HQLIHAASLK LLQDQGLNIP SVVNFQIIST YKHIKHLKML ENTDNSSPST EHSQGLEKQG VHAAGAAEAG PLASVPAQSA KKPCPVSCCK
Characteristics:	Human ZC3HAV1L full-length ORF ( NP_542391.1, 1 a.a. - 300 a.a.) recombinant protein with GST-tag at N-terminal.
Purification:	in vitro wheat germ expression system

## Target Details

Target:	ZC3HAV1L
Alternative Name:	ZC3HAV1L ( <a href="#">ZC3HAV1L Products</a> )
Background:	Full Gene Name: zinc finger CCCH-type, antiviral 1-like Synonyms: C7orf39,MGC14289
Gene ID:	92092
NCBI Accession:	<a href="#">NM_080660</a>

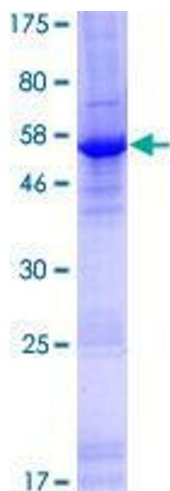
## Application Details

Application Notes:	Optimal working dilution should be determined by the investigator.
Comment:	Preparation method: in vitro, wheat germ expression system Product Quality tested by: 12.5% SDS-PAGE Stained with Coomassie Blue.
Restrictions:	For Research Use only

## Handling

Buffer:	50 mM Tris-HCl, 10 mM reduced Glutathione, pH =8.0 in the elution buffer.
Handling Advice:	Aliquot to avoid repeated freezing and thawing.
Storage:	-80 °C
Storage Comment:	Best use within three months from the date of receipt of this protein.

## Images



**Image 1.**