



[Go to Product page](#)

Datasheet for ABIN1325666

ZCCHC3 Protein (AA 1-403) (GST tag)

1 Image

Overview

Quantity:	25 µg
Target:	ZCCHC3
Protein Characteristics:	AA 1-403
Origin:	Human
Source:	Wheat germ
Protein Type:	Recombinant
Purification tag / Conjugate:	This ZCCHC3 protein is labelled with GST tag.
Application:	ELISA, Western Blotting (WB), Antibody Array (AA), Affinity Purification (AP)

Product Details

Purpose:	ZCCHC3 (Human) Recombinant Protein (P01)
Sequence:	MATGGGAE E E RKRGRPQLLP PARPAARGEE ADGGREKMGW AQVVKNLAEK KGEFREPRPP RREEESGGGG GSAGLGGPAG LAAPDLGDFP PAGRGDPKGR RRD PAGEAVD PRKKKGAAEA GRRKKA EAAA AAMATPARPG EAEDAAERPL QDEPAAAAGP GKGRFLVRIC FQGDEGACPT RDFVVGALIL RSIGMDPSDI YAVIQIPGSR EFDVSFRSAE KLALFLRVYE EKREQEDCWE NFVVLGRSKS SLKTLFILFR NETVDVEDIV TWLKRHCDVL AVPVKVTDRF GIWTGEYKCE IELRQEGGGV RHLPGAFFLG AERGYSWYKG QPKTCFKCGS RTHMSG SGTQ DRCFRCGEEG HLSPYCRKGI VCNLCGKRGH AFAQCPKAVH NSVAAQLTGV AGH
Characteristics:	Human ZCCHC3 full-length ORF (NP_149080.2, 1 a.a. - 403 a.a.) recombinant protein with GST-tag at N-terminal.
Purification:	in vitro wheat germ expression system

Target Details

Target:	ZCCHC3
Alternative Name:	ZCCHC3 (ZCCHC3 Products)
Background:	Full Gene Name: zinc finger, CCHC domain containing 3 Synonyms: C20orf99,MGC104290
Gene ID:	85364
NCBI Accession:	NM_033089

Application Details

Application Notes:	Optimal working dilution should be determined by the investigator.
Comment:	Preparation method: in vitro, wheat germ expression system Product Quality tested by: 12.5% SDS-PAGE Stained with Coomassie Blue.
Restrictions:	For Research Use only

Handling

Buffer:	50 mM Tris-HCl, 10 mM reduced Glutathione, pH =8.0 in the elution buffer.
Handling Advice:	Aliquot to avoid repeated freezing and thawing.
Storage:	-80 °C
Storage Comment:	Best use within three months from the date of receipt of this protein.

Images

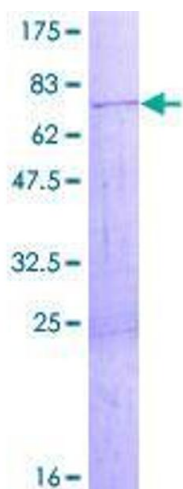


Image 1.