

Datasheet for ABIN1325678
ZCWPW2 Protein (AA 1-356) (GST tag)



[Go to Product page](#)

1 Image

Overview

Quantity:	10 µg
Target:	ZCWPW2
Protein Characteristics:	AA 1-356
Origin:	Human
Source:	Wheat germ
Protein Type:	Recombinant
Purification tag / Conjugate:	This ZCWPW2 protein is labelled with GST tag.
Application:	ELISA, Western Blotting (WB), Antibody Array (AA), Affinity Purification (AP)

Product Details

Purpose:	ZCWPW2 (Human) Recombinant Protein (P01)
Sequence:	MDKEKLDVKI EYCNYAMDSS VENMYV NKVW VQCENENCLK WRLLSSEDSA KVDHDEPWYC FMNTDSRYNN CSISEEDFPE ESQLHQCGFK IVYSQLPLGS LVLVKLQNW P SWPGILCPDR FKGKYVTYDP DGNVEEYHIE FLGDPHSRSW IKATFVGHYS ITLKPEKCKN KKKWYKSALQ EACLLYGYSH EQRLEMCCLS KLQDKSETHD KVAALVKKRK QTSKNNIEKK KPKFRKRKRK AILKCSFENV YSDDALSKEN RVCETEVLL KELEQMLQQA LQPTATPDES EEGHGEEINM GEKLSKCSPE APAGSLFENH YEEDYLVIDG IKLKAGECIE DITNKFKEID ALMSEF
Characteristics:	Human ZCWPW2 full-length ORF (NP_001035522.1, 1 a.a. - 356 a.a.) recombinant protein with GST-tag at N-terminal.
Purification:	in vitro wheat germ expression system

Target Details

Target:	ZCWPW2
Alternative Name:	ZCWPW2 (ZCWPW2 Products)
Background:	Full Gene Name: zinc finger, CW type with PWWP domain 2 Synonyms: ZCW2
Gene ID:	152098
NCBI Accession:	NM_001040432

Application Details

Application Notes:	Optimal working dilution should be determined by the investigator.
Comment:	Preparation method: in vitro, wheat germ expression system Product Quality tested by: 12.5% SDS-PAGE Stained with Coomassie Blue.
Restrictions:	For Research Use only

Handling

Buffer:	50 mM Tris-HCl, 10 mM reduced Glutathione, pH =8.0 in the elution buffer.
Handling Advice:	Aliquot to avoid repeated freezing and thawing.
Storage:	-80 °C
Storage Comment:	Best use within three months from the date of receipt of this protein.

Images

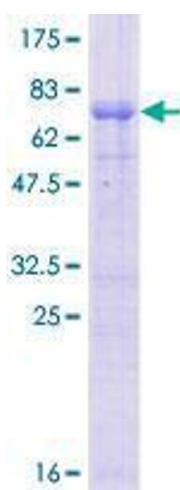


Image 1.