



[Go to Product page](#)

Datasheet for ABIN1325680

ZDHHC1 Protein (AA 1-485) (GST tag)

1 Image

Overview

Quantity:	25 µg
Target:	ZDHHC1
Protein Characteristics:	AA 1-485
Origin:	Human
Source:	Wheat germ
Protein Type:	Recombinant
Purification tag / Conjugate:	This ZDHHC1 protein is labelled with GST tag.
Application:	ELISA, Western Blotting (WB), Antibody Array (AA), Affinity Purification (AP)

Product Details

Purpose:	ZDHHC1 (Human) Recombinant Protein (P01)
Sequence:	MYKMNICNKP SNKTAPEKSV WTAPAQPSGP SPELQGQRSR RNGWSWPPHP LQIVAWLLYL FFAVIGFGL VPLLPHHWVP AGYACMGAIF AGHLVVHLTA VSIDPADANV RDKSYAGPLP IFNRSQHAHV IEDLHCNLCN VDVSARSKHC SACNKCVCGF DHHCKWLNNC VGERNYRLF HSVASALLGV LLLVLVATYV FVEFFVNPMR LRTNRHFEVL KNHTDVWFVF LPAAPVETQA PAILALAALL ILLGLLSTAL LGHLLCFHIY LMWHKLTTYE YIVQHRPPQE AKGVHRELES CPPKMRPIQE MEFYMRTFRH MRPEPPGQAG PAAVNAKHSR PASPDPTPGR RDCAGPPVQV EWDKRPPLPW RSPLLLAMW GPQAPPCLCR KRGRGACIKC ERLRPRIIRR GLGPPAAAPA RRRIPRTPAL CTPLALPAPT TRRRQSPWTR FQWRRRAWAA PLWPPRGAGA DSPRWRGRRV RPPFS
Characteristics:	Human ZDHHC1 full-length ORF (NP_037436.1, 1 a.a. - 485 a.a.) recombinant protein with GST-tag at N-terminal.

Product Details

Purification: in vitro wheat germ expression system

Target Details

Target: ZDHHC1

Alternative Name: ZDHHC1 ([ZDHHC1 Products](#))

Background: Full Gene Name: zinc finger, DHHC-type containing 1
Synonyms: C16orf1,HSU90653,ZNF377

Gene ID: 29800

NCBI Accession: [NM_013304](#)

Application Details

Application Notes: Optimal working dilution should be determined by the investigator.

Comment: Preparation method: in vitro, wheat germ expression system
Product Quality tested by: 12.5% SDS-PAGE Stained with Coomassie Blue.

Restrictions: For Research Use only

Handling

Buffer: 50 mM Tris-HCl, 10 mM reduced Glutathione, pH =8.0 in the elution buffer.

Handling Advice: Aliquot to avoid repeated freezing and thawing.

Storage: -80 °C

Storage Comment: Best use within three months from the date of receipt of this protein.

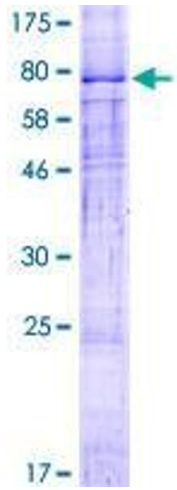


Image 1.