

Datasheet for ABIN1325683
ZDHHC12 Protein (AA 1-322) (GST tag)



[Go to Product page](#)

1 Image

Overview

Quantity:	10 µg
Target:	ZDHHC12
Protein Characteristics:	AA 1-322
Origin:	Human
Source:	Wheat germ
Protein Type:	Recombinant
Purification tag / Conjugate:	This ZDHHC12 protein is labelled with GST tag.
Application:	ELISA, Western Blotting (WB), Antibody Array (AA), Affinity Purification (AP)

Product Details

Purpose:	ZDHHC12 (Human) Recombinant Protein (P01)
Sequence:	MAPWALLSPG VLVRTGHTVL TWGITLVFL HDTDKSADEL LATHSHSWNQ HLQAFAPGT HFPTSNCTPT PTPVLPGPA SLCSPASPEL RQWEEQGELL LPLFLLLVL GSLLLYLAVS LMDPGYVNVQ PQQEELKEE QTAMVPPAIP LRRCRYCLVL QPLRARHCRE CRRCVRRYDH HCPWMENCVG ERNHPLFWVY LALQLVLLW GLYLAWSGLR FFQPWGLWLR SSGLLFATFL LLSLFSLVAS LLLVSHLYLV ASNTTTFEFI SSHRIAYLRQ RPSNPFDRGL TRNLAHFFCG WPSGSWETLW AEEEEEGSSP AV
Characteristics:	Human ZDHHC12 full-length ORF (AAH48251.1, 1 a.a. - 322 a.a.) recombinant protein with GST-tag at N-terminal.
Purification:	in vitro wheat germ expression system

Target Details

Target:	ZDHHC12
Alternative Name:	ZDHHC12 (ZDHHC12 Products)
Background:	Full Gene Name: zinc finger, DHHC-type containing 12 Synonyms: FLJ14524,MGC13153,MGC54050,ZNF400
Gene ID:	84885

Application Details

Application Notes:	Optimal working dilution should be determined by the investigator.
Comment:	Preparation method: in vitro, wheat germ expression system Product Quality tested by: 12.5% SDS-PAGE Stained with Coomassie Blue.
Restrictions:	For Research Use only

Handling

Buffer:	50 mM Tris-HCl, 10 mM reduced Glutathione, pH =8.0 in the elution buffer.
Handling Advice:	Aliquot to avoid repeated freezing and thawing.
Storage:	-80 °C
Storage Comment:	Best use within three months from the date of receipt of this protein.

Images

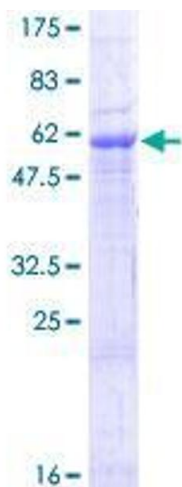


Image 1.