

Datasheet for ABIN1325692

ZDHHC19 Protein (AA 1-243) (GST tag)



[Go to Product page](#)

1 Image

Overview

Quantity:	10 µg
Target:	ZDHHC19
Protein Characteristics:	AA 1-243
Origin:	Human
Source:	Wheat germ
Protein Type:	Recombinant
Purification tag / Conjugate:	This ZDHHC19 protein is labelled with GST tag.
Application:	ELISA, Western Blotting (WB), Antibody Array (AA), Affinity Purification (AP)

Product Details

Purpose:	ZDHHC19 (Human) Recombinant Protein (P01)
Sequence:	MTLLTDATPL VKEPHPLPLV PRPWFLPSLF AAFNVLLLVF FSGLFFAFPL VSLNFSDPGI LHQGSAEQGP LTVHVWVWNH GAFRLQWCPK CCFHRPPRTY HCPWCNICVE VSAPLPVHQP SPHIWLGPGA SLIQGPGLGV KLFSGLLKAK GGSNSQPPLV THVFSTCTCP GRLAVACRGA DMHRASASVL GWVRPGEERQ PSVPPLGSLT RDTQAPQAGC PPGLGGLACP RLGVPVGGSP GSE
Characteristics:	Human ZDHHC19 full-length ORF (AAH34801.1, 1 a.a. - 243 a.a.) recombinant protein with GST-tag at N-terminal.
Purification:	in vitro wheat germ expression system

Target Details

Target:	ZDHHC19
---------	---------

Target Details

Alternative Name:	ZDHHC19 (ZDHHC19 Products)
Background:	Full Gene Name: zinc finger, DHHC-type containing 19 Synonyms: MGC33345
Gene ID:	131540

Application Details

Application Notes:	Optimal working dilution should be determined by the investigator.
Comment:	Preparation method: in vitro, wheat germ expression system Product Quality tested by: 12.5% SDS-PAGE Stained with Coomassie Blue.
Restrictions:	For Research Use only

Handling

Buffer:	50 mM Tris-HCl, 10 mM reduced Glutathione, pH =8.0 in the elution buffer.
Handling Advice:	Aliquot to avoid repeated freezing and thawing.
Storage:	-80 °C
Storage Comment:	Best use within three months from the date of receipt of this protein.

Images

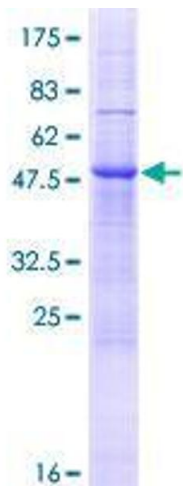


Image 1.