

Datasheet for ABIN1325695
ZDHHC23 Protein (AA 1-409) (GST tag)



[Go to Product page](#)

1 Image

Overview

Quantity:	10 µg
Target:	ZDHHC23
Protein Characteristics:	AA 1-409
Origin:	Human
Source:	Wheat germ
Protein Type:	Recombinant
Purification tag / Conjugate:	This ZDHHC23 protein is labelled with GST tag.
Application:	ELISA, Western Blotting (WB), Antibody Array (AA), Affinity Purification (AP)

Product Details

Purpose:	ZDHHC23 (Human) Recombinant Protein (P01)
Sequence:	MTQKGSMKPV KKKKTEEPPEL EPLCCCEYID RNGEKNHVAT CLCDCQDLDE GCDRWITCKS LQPETCERIM DTISDRLRIP WLRGAKKVNI SIIPPLVLLP VFLHVASWHF LLGVVVLTSL PVLALWYYYL THRRKEQTLF FLSLGLFSLG YMYVFLQEV VPKGRVGPVQ LAVLTCGLFL ILLALHRAKK NPGYLSNPAS GDRSLSSSQL ECLSRKGQEK TKGFPADMS GSLNNRRTTKD DPKGSSKMPA GSPTKAKEDW CAKCQLVRPA RAWHCRICGI CVRRMDHHCV WINSVCGESN HQAFILALLI FLLTSVYGIT LTLDTICRDR SVFTALFYCP GYANYSSAL SFTCVWYSVI ITAGMAYIFL IQLINISYNV TEREVQQALR QKTGRRLLCG LIVDTGLLG
Characteristics:	Human ZDHHC23 full-length ORF (NP_775841.2, 1 a.a. - 409 a.a.) recombinant protein with GST-tag at N-terminal.
Purification:	in vitro wheat germ expression system

Target Details

Target:	ZDHHC23
Alternative Name:	ZDHHC23 (ZDHHC23 Products)
Background:	Full Gene Name: zinc finger, DHHC-type containing 23 Synonyms: MGC42530,NIDD
Gene ID:	254887
NCBI Accession:	NM_173570

Application Details

Application Notes:	Optimal working dilution should be determined by the investigator.
Comment:	Preparation method: in vitro, wheat germ expression system Product Quality tested by: 12.5% SDS-PAGE Stained with Coomassie Blue.
Restrictions:	For Research Use only

Handling

Buffer:	50 mM Tris-HCl, 10 mM reduced Glutathione, pH =8.0 in the elution buffer.
Handling Advice:	Aliquot to avoid repeated freezing and thawing.
Storage:	-80 °C
Storage Comment:	Best use within three months from the date of receipt of this protein.

Images

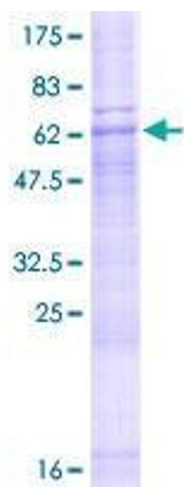


Image 1.