

Datasheet for ABIN1325702
ZDHHC7 Protein (AA 1-208) (GST tag)



[Go to Product page](#)

1 Image

Overview

Quantity:	25 µg
Target:	ZDHHC7
Protein Characteristics:	AA 1-208
Origin:	Human
Source:	Wheat germ
Protein Type:	Recombinant
Purification tag / Conjugate:	This ZDHHC7 protein is labelled with GST tag.
Application:	ELISA, Western Blotting (WB), Antibody Array (AA), Affinity Purification (AP)

Product Details

Purpose:	ZDHHC7 (Human) Recombinant Protein (P01)
Sequence:	MLTDPGAVPK GNATKEYMES LQLKPGEVIY KCPKCCCIKP ERAHHC SICK RCIRKMDHHC PWNNCVGEK NQRFFVLFTM YIALSSVHAL ILCGFQFISC VRGQWTECSD FSPITVILL IFLCLEGLLF FTFTAVMFGT QIHSICNDET EIERLKSEKP TWERRLRWEG MKSVFGGPPS LLWMNPFVGF RFRRLPTRPR KGGPEFSV
Characteristics:	Human ZDHHC7 full-length ORF (AAH17702, 1 a.a. - 208 a.a.) recombinant protein with GST-tag at N-terminal.
Purification:	in vitro wheat germ expression system

Target Details

Target:	ZDHHC7
---------	--------

Target Details

Alternative Name:	ZDHHC7 (ZDHHC7 Products)
Background:	Full Gene Name: zinc finger, DHHC-type containing 7 Synonyms: FLJ10792,FLJ20279,ZNF370
Gene ID:	55625

Application Details

Application Notes:	Optimal working dilution should be determined by the investigator.
Comment:	Preparation method: in vitro, wheat germ expression system Product Quality tested by: 12.5% SDS-PAGE Stained with Coomassie Blue.
Restrictions:	For Research Use only

Handling

Buffer:	50 mM Tris-HCl, 10 mM reduced Glutathione, pH =8.0 in the elution buffer.
Handling Advice:	Aliquot to avoid repeated freezing and thawing.
Storage:	-80 °C
Storage Comment:	Best use within three months from the date of receipt of this protein.

Images

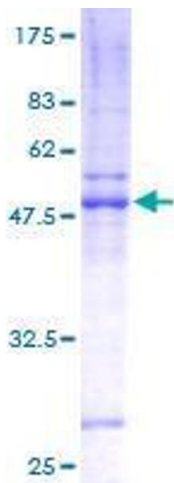


Image 1.