



[Go to Product page](#)

Datasheet for ABIN1325726

ZFC3H1 Protein (AA 1-358) (GST tag)

1 Image

Overview

Quantity:	10 µg
Target:	ZFC3H1
Protein Characteristics:	AA 1-358
Origin:	Human
Source:	Wheat germ
Protein Type:	Recombinant
Purification tag / Conjugate:	This ZFC3H1 protein is labelled with GST tag.
Application:	Antibody Array (AA), Affinity Purification (AP), ELISA, Western Blotting (WB)

Product Details

Purpose:	PSRC2 (Human) Recombinant Protein (P01)
Sequence:	MATADTPAPA SSSLSPKEEG ELEDGEISDD DNNSQIRSRS SSSSSGGGLL PYPRRRPPHS ARGGGSGGGG GSSSSSSSSQ QQLRNFSRSR HASERGHARG PSSYRPKEPF RSHPPSVRMP SSSLESSPR PSFWERSHLA LDRFRFRGRP YRGGSRWSRG RGVGERGGKP GCRPPLGGGA GSGFSSSQSW REPSPPRKSS KSFGRSPSRK QNYSSKNENC VEETFEDLLL KYKQIQLELE CINKDEKLAL SSKEENVQED PKTLNFEDQT STDNVSITKD SSKEVAPEEK TQVKTFQAFE LKPLRQKLT L PGDKNRLKKV KDGAKPLSLK SDTTDSSQGI PYRVKEGFTP IPGLKFSA
Characteristics:	Human PSRC2 full-length ORF (AAH15679.1, 1 a.a. - 358 a.a.) recombinant protein with GST-tag at N-terminal.
Purification:	in vitro wheat germ expression system

Target Details

Target:	ZFC3H1
Alternative Name:	ZFC3H1 (ZFC3H1 Products)
Background:	Full Gene Name: zinc finger, C3H1-type containing Synonyms: CCDC131,DKFZp686A0722,KIAA0546,MGC23401,MGC90200,PSRC2
Gene ID:	196441

Application Details

Application Notes:	Optimal working dilution should be determined by the investigator.
Comment:	Preparation method: in vitro, wheat germ expression system Product Quality tested by: 12.5% SDS-PAGE Stained with Coomassie Blue.
Restrictions:	For Research Use only

Handling

Buffer:	50 mM Tris-HCl, 10 mM reduced Glutathione, pH =8.0 in the elution buffer.
Handling Advice:	Aliquot to avoid repeated freezing and thawing.
Storage:	-80 °C
Storage Comment:	Best use within three months from the date of receipt of this protein.

Images

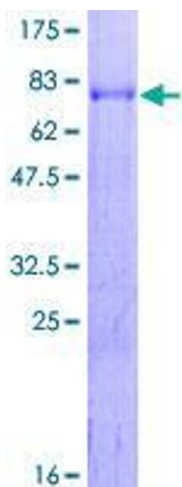


Image 1.