



[Go to Product page](#)

Datasheet for ABIN1325730

ZFHX3 Protein (AA 2811-2910) (GST tag)

1 Image

Overview

Quantity:	10 µg
Target:	ZFHX3
Protein Characteristics:	AA 2811-2910
Origin:	Human
Source:	Wheat germ
Protein Type:	Recombinant
Purification tag / Conjugate:	This ZFHX3 protein is labelled with GST tag.
Application:	ELISA, Western Blotting (WB), Antibody Array (AA), Affinity Purification (AP)

Product Details

Purpose:	ZFHX3 (Human) Recombinant Protein (Q01)
Sequence:	EDFESPSMSS VLNFDQTKL DNDDCSSVNT AITDTTGGDE GNADNDSATG IATETKSSSA PNEGLTKAAM MAMSEYEDRL SSGLVSPAPS FYSKEYDNEG
Characteristics:	Human ZFHX3 partial ORF (NP_008816, 2811 a.a. - 2910 a.a.) recombinant protein with GST-tag at N-terminal.
Purification:	in vitro wheat germ expression system

Target Details

Target:	ZFHX3
Alternative Name:	ZFHX3 (ZFHX3 Products)

Target Details

Background:	Full Gene Name: zinc finger homeobox 3 Synonyms: ATBF1,ATBT
Gene ID:	463
NCBI Accession:	NM_006885
Pathways:	Regulation of Muscle Cell Differentiation , Skeletal Muscle Fiber Development

Application Details

Application Notes:	Optimal working dilution should be determined by the investigator.
Comment:	Preparation method: in vitro, wheat germ expression system Product Quality tested by: 12.5% SDS-PAGE Stained with Coomassie Blue.
Restrictions:	For Research Use only

Handling

Buffer:	50 mM Tris-HCl, 10 mM reduced Glutathione, pH =8.0 in the elution buffer.
Handling Advice:	Aliquot to avoid repeated freezing and thawing.
Storage:	-80 °C
Storage Comment:	Best use within three months from the date of receipt of this protein.

Images

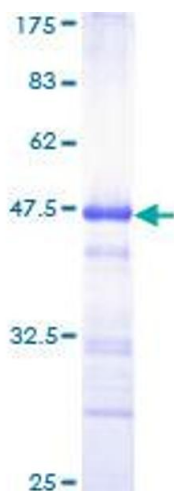


Image 1.