



[Go to Product page](#)

Datasheet for ABIN1325734

## Zfp-1 Protein (AA 1-352) (GST tag)

### 1 Image

#### Overview

Quantity:	10 µg
Target:	Zfp-1
Protein Characteristics:	AA 1-352
Origin:	Human
Source:	Wheat germ
Protein Type:	Recombinant
Purification tag / Conjugate:	This Zfp-1 protein is labelled with GST tag.
Application:	ELISA, Western Blotting (WB), Affinity Purification (AP), Antibody Array (AA)

#### Product Details

Purpose:	ZFP1 (Human) Recombinant Protein (P01)
Sequence:	MERDHRNPDE QARQFLILKN QTPIEERGDL FGKALNLNTD FVSLRQVPYK YDLYEKTLY NSDLLNSNRS YAGKQTDECN EFGKALLYLK QEKTHSGVEY SEYNKSGKAL SHKAAIFKHQ KIKNLVQPFI CTYCDKAFSF KSLLSHKRI HTGEKPYECN VCKKTFSHKA NLIKHQRIHT GEKPFECPEC GKAFTHQSNL IVHQRAHMEK KPYECSECGK TFAQKFELTT HQRHTGERP YECNECAKTF FKKSNIHQ KIHTGEKRYE CSECGKSFQ NSQLIHMRT HTGEKPYECT ECGKTFSQRS TLRHLRIHT GEKPYECSEC GKAFSRKSRL SVHQRVHIGE KP
Characteristics:	Human ZFP1 full-length ORF ( ENSP00000333192, 1 a.a. - 352 a.a.) recombinant protein with GST-tag at N-terminal.
Purification:	in vitro wheat germ expression system

## Target Details

Target:	Zfp-1
Alternative Name:	ZFP1 ( <a href="#">Zfp-1 Products</a> )
Background:	Full Gene Name: zinc finger protein 1 homolog (mouse) Synonyms: FLJ34243,ZNF475
Gene ID:	162239

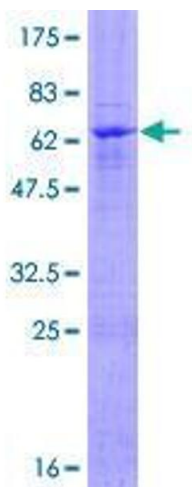
## Application Details

Application Notes:	Optimal working dilution should be determined by the investigator.
Comment:	Preparation method: in vitro, wheat germ expression system Product Quality tested by: 12.5% SDS-PAGE Stained with Coomassie Blue.
Restrictions:	For Research Use only

## Handling

Buffer:	50 mM Tris-HCl, 10 mM reduced Glutathione, pH =8.0 in the elution buffer.
Handling Advice:	Aliquot to avoid repeated freezing and thawing.
Storage:	-80 °C
Storage Comment:	Best use within three months from the date of receipt of this protein.

## Images



**Image 1.**